

CECHEN

STAINLESS STEEL WIRE & WIRE MESH

SINCE 1986



Tel: 0086-0318-662 8888

Fax: 0086-0318-7880777

E-mail: info@ccwirecloth.com

Web: www.ccwirecloth.com

Factory Address: South Zhengrao Road Anping County, Hebei Province, China (P.C 053600)

Oversea Market Office Address: Tower B Wanda Office Building, Shijiazhuang City, Hebei Province, China



PRODUCT BROCHURE 

Hebei Cechen New Material Co., Ltd



About Us

Hebei Cechen New Material Co., Ltd. was founded in 1986, is a collection company with production, research, development and sales, as one of the professional stainless steel wire, alloy wire, metal mesh and mesh product manufacturers, located in Anping County, Hengshui City, Hebei Province, China. Cechen has 3 factories and 1 branch: wire rod drawing factory, fine wire drawing factory, mesh weaving factory and Shijiazhuang branch. Total area: over 30,000 square meters, the total number of employees over 150 people.

2012

Established Anping Wire Mesh Factory

2016

Obtained ISO 9001 Certification

2019

Became Alibaba 10-year High-Quality Supplier

2025

Focus on Stainless Steel Wire Mesh Industry for 39 years

1986

Established the First Wire Drawing Workshop

1995

Established Yihui Wire Drawing Factory

2009

Established Anping Wire Drawing Factory - Fine Wire Factory

2011

Established Shijiazhuang Branch International Trade Department

Cechen always concentrate on wire products and mesh products. We adopt the advanced drawing wire technology from japan, purchase wire rod from south korea, japan and some high-quality wire from domestic supplier, all products are traceable.

We assured we could offer most competitive products and service to you and your end customers. Believe we could become one of the leading wire and mesh manufacturers in china.



河北策宸新材料科技有限公司
HEBEI CECHEEN NEW MATERIAL CO., LTD

Quality Control

At Cechen, quality assurance is always our primary concern. We adhere that excellent quality is the only way to keep long-term cooperate with our new potential customers and old partners. We pay great importance to following basic inspection steps to ensure all our raw materials and final products meet our strict standards for quality. Except the basic inspection item, we can coordinate with you to process other inspection finalized meet the end customers's requirements.

1 Raw Material Inspection

When we receive the incoming raw materials, we will test the chemical components, physical properties and tolerance of the stainless steel wire to ensure that all materials meet or exceed the quality standard and requirements.



2 Mold Test Equipment

We have professional team for wire model adjustment and test, which is can ensure the accuracy of our wire materials. This is a very crucial first step in the production of stainless steel wire.



3 Wire Diameter Inspection

After primary inspection, the incoming raw materials will be sent into the workshop for wire drawing. The drawing process will be stopped until the wire diameter is drawn into the desired size for weaving. During this wire drawing, we will again measure the wire diameter.

4 The Finished Wire Inspection

We will test the mill certificate, wire diameter, tensile strength, net weight, the color and surface etc.



5 C.S Analyzer And Other Analyzer

Sometimes we can make this test follow customers's request. This is the Arc Infrared Carbon Sulfur Analyzer in the lab. Besides, we can coordinate with you offer other report or certificate: Rohs, MSDS, Reach, KSO, Hazardous Substance Analysis etc.



6 In Weaving Process Inspection

Before weaving, our technicians will check if the CNC weaving machines are set and operated correctly. During the trial operation, our QC personnel will check if the flatness of the product meet corresponding requirements.

7 First Roll And All Finished Rolls Test



Stainless Steel Wire & Alloy Wire

- Cechen specialized in metal wire production since 1986. As a leading stainless steel wire and all kinds of alloy metal wire manufacturer and supplier, we offer a comprehensive range of high-quality wire products to wholesalers, distributors and bulk buyers around the world.
- From wire drawing to annealing, all are completed in the factory, and every link of production can be traced. Our prices are reasonable and the quality is reliable.

» Factory & Product Show



Stainless Steel Fibre Wire



Stainless Steel Fine Wire



Stainless Steel Thin Wire



Stainless Steel Coil Wire



Ni & Cr 8020 Wire



Alloy 20 Wire



Monel Wire



Alloy 2030 Wire

PRODUCT PARAMETER	
Diameter	0.016mm-4mm.
Material Grade	Alloy wire etc. 201 410 430 304 316 304L 316L 321 904L Monel Inconel Ni & Cr Alloy Wire.
Type	W1 Soft Wire, W2 Hard Wire, Matt Wire, Bright Wire, Spring Wire.
Characteristics	High-Temperature Resistance, Excellent Corrosion Resistance, Superior Electrical Resistivity, High Toughness.
Application	Mesh Weaving, Flexible Hose Braiding, Kitchen Cleaning Wire, Wire for Yarn Textiles or Braid Media, Making Brush Wire, Binding Wire, Redrawing Wire, Electric Fencing Poly Wire.
Packing	Wind in spool or coil then in carton, wooden box or wooden pallet.
Spool Pack	DIN125 DIN160 DIN200 DIN250 NS-4 NS-5 NP-13 PT-25 PL-2 HK80 K80 HK115 or customized.
Coil Pack	1-200kg/coil follow customized Or core package Or drum package etc.

- Cechen Stainless steel wire has a wide range of applications due to its excellent strength, corrosion resistance, high-temperature resistance and durability. We concentrate on the end customers's demand, we have over 39 years production and exporting experience to offer you the best wire solution.
- In the stainless steel wire industry, we always adhere to the principle of "quality first". By continuously optimizing the production process and strictly controlling quality, we ensure that every product can stand the test of the market.



» Application Display



- All kinds of mesh weaving



- Braid industry hose and civilian hose



- Stainless steel wire for making brush



- Electric fencing polywire in farming



- Binding tie wire and industry dust collection parts filter cage



- Stainless steel wire for textiles industry, like as metal media in gloves

Stainless Steel Woven Mesh

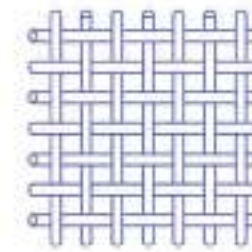
- Cechen produce mesh 1- 635 with square mesh and finest dutch weave mesh: 2800mesh. We have typical advantages for the stainless steel woven mesh products; We could make whole process traceability from the wire drawing, wire annealing till finished mesh items.
- We have over 100sets machines; for the heavy duty machinery can weave max width 5M; unlimited mesh length construction could produce infinite length, with even meets aperture and strong mesh surface.

PRODUCT PARAMETER

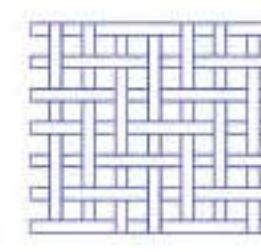
Material Grade	201 304 316 304L 316L etc.
Mesh Count	1-2800 mesh
Wire Diameter	0.016mm-5mm
Width	0.914m, 1m, 1.22m, 1.3m, 1.524m or customized
Length	15m, 30m, 50m, 60m, 100m, etc. or customized
Standard	AISI, ASTM, JIS, DIN, EN, BS
Weave Pattern	Plain, Twill, Dutch, Five Heddle Weave, Crimped etc.



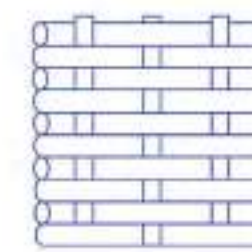
» Style of The Weave



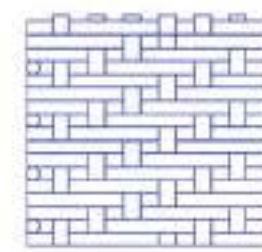
Plain Weave



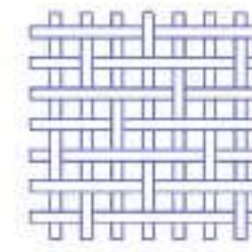
Twill Weave



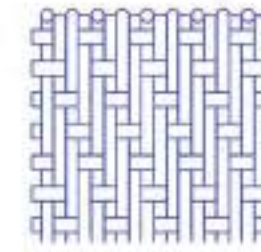
Plain Dutch



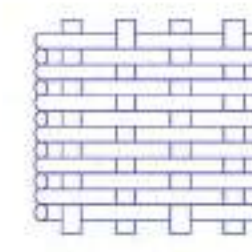
Twill Dutch



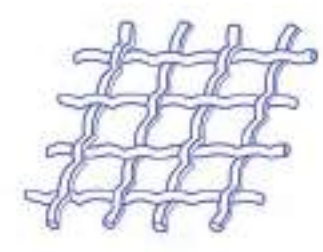
Five Heddle Weave



Reversed Twill Dutch

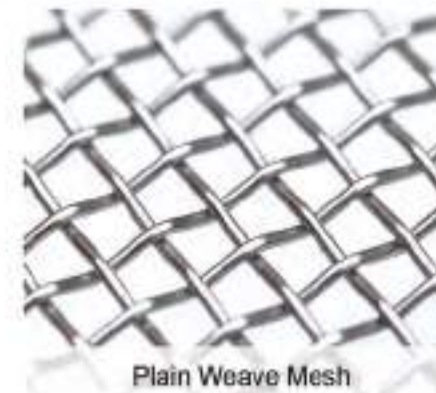


Reverse Plain Dutch



Crimped Weave

» Product Show



Plain Weave Mesh



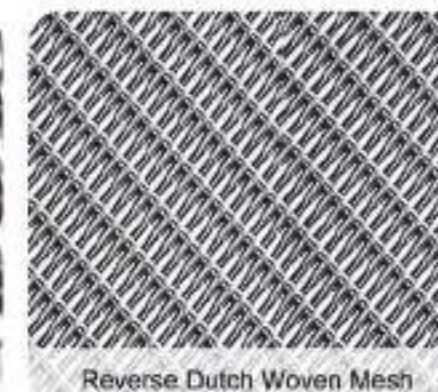
Twill Weave Mesh



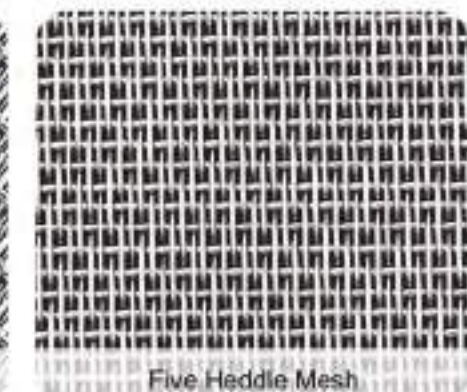
Crimped Mesh



Dutch Woven Mesh



Reverse Dutch Woven Mesh



Five Heddle Mesh

Nickel Wire Mesh

- Nickel wire mesh is a metal wire mesh made of high-purity nickel wire. The materials of nickel wire mesh are N2, N4, N6, N8, NI200, NI201, etc. The most commonly used nickel wire mesh materials are N4, N6 and N200. Different meshes, wire diameters and weaving methods can be customized according to different usage requirements.
- Pure nickel wire mesh has excellent corrosion resistance and acid resistance. It is mainly used for gas and liquid screening and medium separation under strong acid and strong alkali environment conditions.

» Factory & Product Show



» Product Pictures Of Different Forms



PRODUCT PARAMETER	
Material Grade	N2, N4, N6, N8, NI200, NI201.
Mesh Count	2-400 mesh or special customized.
Width	1mm-3600mm or customized.
Common Type	Plain, Twill, Dutch, Expanded, Crimped, Knitted etc.
Application	Hydrogen production, Petroleum, chemical engineering, chemical fiber, equipment manufacturing, electrolytic electroplating, metallurgy, medicine, alkali production industry, water treatment, electronic products, food and other industries.

Titanium Wire Mesh

- Titanium wire mesh is a highly durable and corrosion-resistant material that is commonly used in a variety of industrial, medical, and scientific applications. It is made from titanium wire woven into a mesh pattern, providing strength, lightweight properties, and resistance to rust or degradation, especially in harsh environments.
- Titanium woven mesh from non-magnetic titanium wires comes in two types: black (made from pure titanium wire) and white (woven from pure graphite wire).

» Factory & Product Show



Black Titanium Mesh



White Titanium Mesh

PRODUCT PARAMETER

Material Grade	TA1, TA2, GR1, GR2
Mesh Count	2-400 mesh or special customized
Width	1mm-3600mm or customized
Common Type	Plain, Twill, Dutch, Expanded, Crimped, Knitted etc.
Application	Hydrogen production, aerospace, fertilizer plants, shipbuilding, military industry, chemical machinery, power, seawater desalination, electrolytic electroplating, electronic products and other fields.

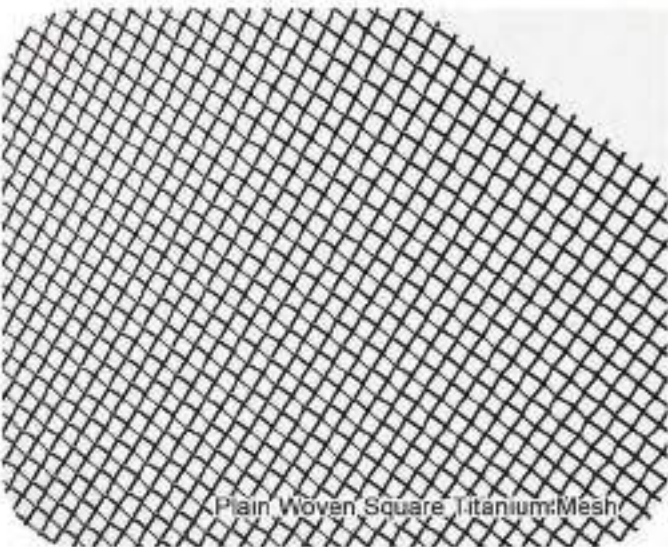
» Product Pictures Of Different Forms



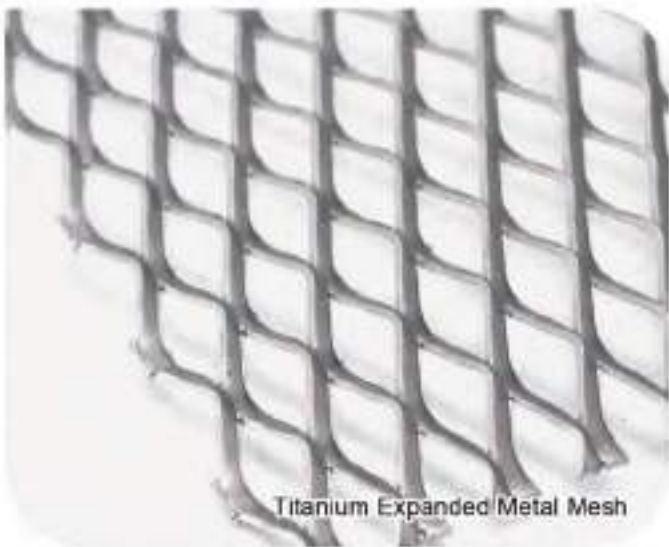
Plain Woven Square Titanium Mesh



Titanium Knitted Wire Mesh



Plain Woven Square Titanium Mesh

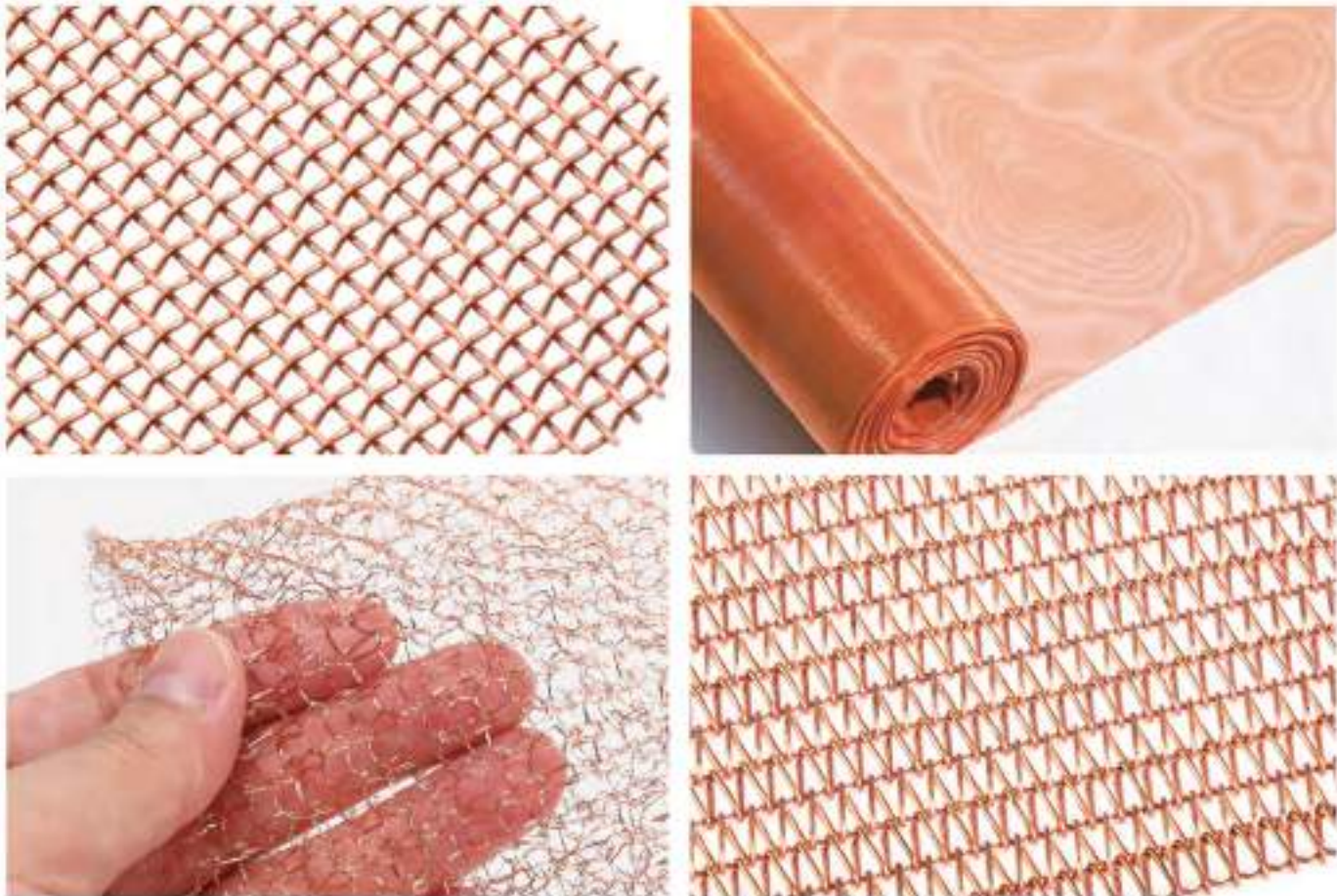


Titanium Expanded Metal Mesh

Copper Wire Mesh

- **Red Copper Wire Mesh** is woven with Pure copper wire 99.9%, Annealing to make the wire more flexible, Class A process.The red copper mesh is a mesh material made of copper (i.e. high-purity copper). Red copper has excellent electrical conductivity, thermal conductivity and corrosion resistance. Compared with ordinary copper mesh, Red copper usually has higher purity and better processing performance, so it is widely used in high-demand applications.

» Product Show

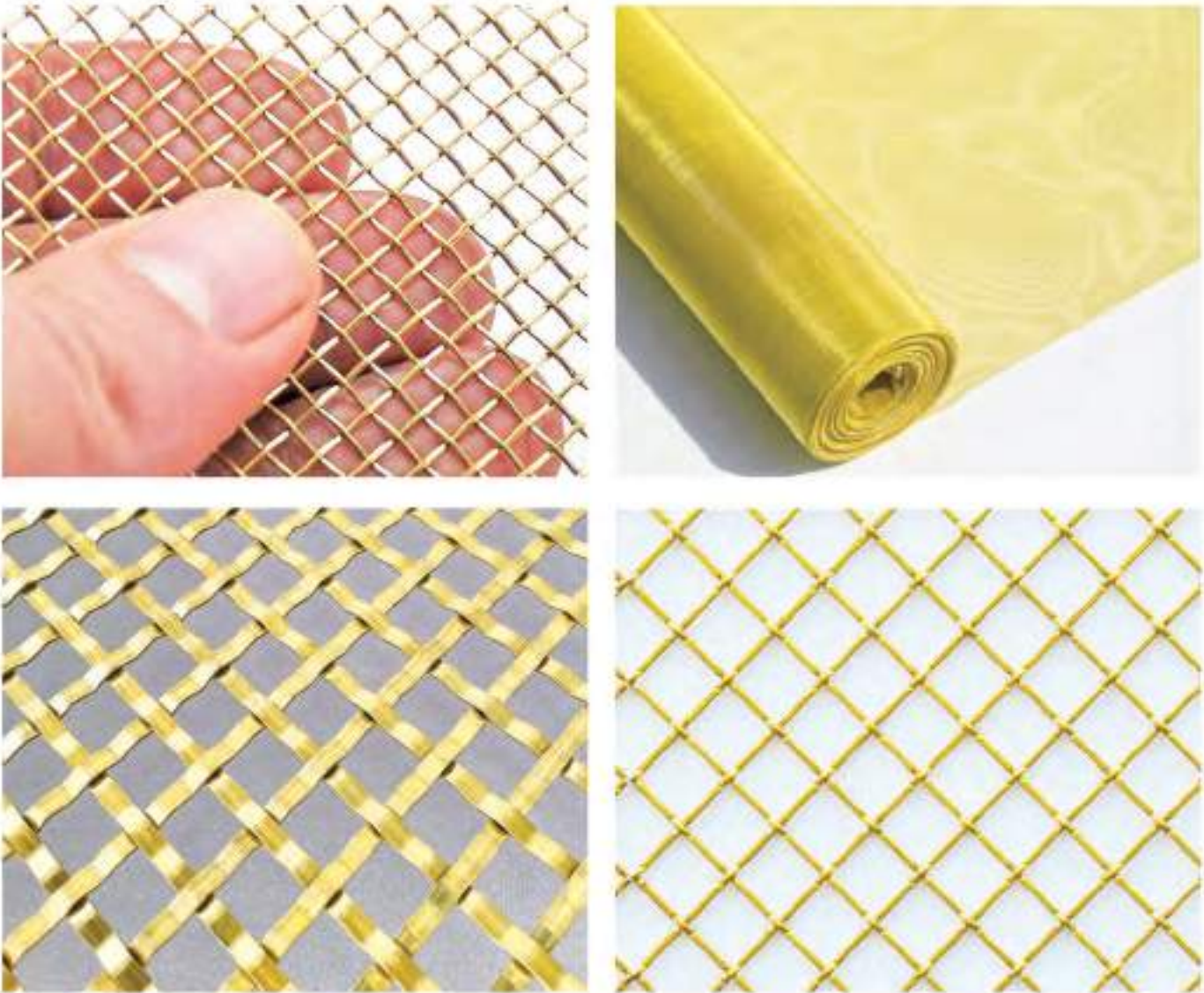


PRODUCT PARAMETER	
Material	Copper Wire (pure copper proportion 99.9%)
Woven style	Plain Weave, Twill Weave, Dutch Weave.
Mesh	2-200 mesh
Diameter	0.05-1.8mm
Roll Width	0.5-3m or customized
Roll Length	30m or customized

- **Brass Wire Mesh** is a type of woven or knitted mesh made from brass wires,commonly used in a variety of applications due to its combination of strength, corrosion resistance, and attractive gold-like appearance.

PRODUCT PARAMETER	
Material	Brass Wire (65 brass, 70 brass and 80 brass)
Woven StyleMes	Plain Weave, Twill Weave and Dutch Weave
Mesh	2-200 mesh
Diameter	0.05-2mm
Roll Width	0.5-2m
Roll Length	10-100m or customized

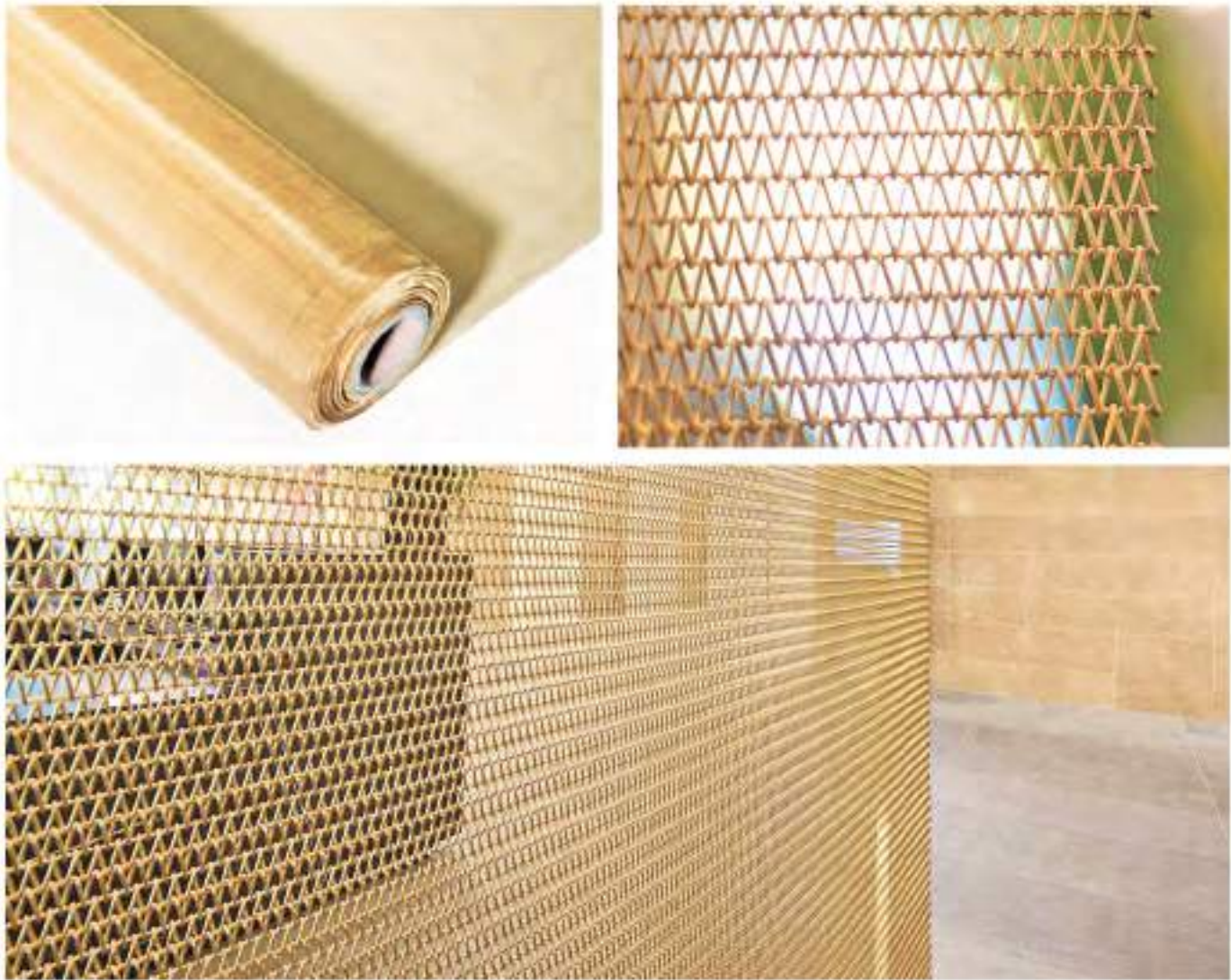
» Product Show



- **Phosphor Bronze Mesh** is a mesh material woven from phosphor bronze. Phosphor bronze is a copper alloy that contains a small amount of phosphorus.

PRODUCT PARAMETER	
Material	Phosphor Bronze Wire
Woven Style	Plain Weave, Twill Weave or Dutch Weave
Mesh	6-250 mesh
Diameter	0.04-0.7mm
Roll Width	0.5-1.5m
Roll Length	10-100m

» Product Show



» Scenario Application



High Temperature-Resistant Wire Mesh

- High temperature-resistant wire mesh is designed to withstand extreme heat without degrading or losing its structural integrity. It is often used in industrial, automotive, and aerospace applications where heat resistance is critical.
- When selecting a high temperature-resistant wire mesh, the material you choose depends on several factors like the maximum temperature exposure, environment (oxidizing or reducing), mechanical load, and chemical exposure. Below are some recommended materials and types of mesh, based on typical high-temperature applications:

PRODUCT PARAMETER	
Material	Nickel-Chromium Alloy, 316L, 309S, 310S (06Cr25Ni), 321(06Cr18Ni10Ti), Cr20Ni80, Cr15Ni60, Cr20Ni35, Monel, Inconel, Titanium etc.
Woven style	Plain Weave, Twill Weave, Dutch Weave, Expanded, Crimped, Knitted etc.

» Product Show



High Corrosion-Resistant Wire Mesh

- Corrosion is one of the leading causes of material failure, especially in environments exposed to harsh chemicals, extreme temperatures, moisture, or salts. High corrosion-resistant wire mesh is designed specifically to withstand these conditions, maintaining its structural integrity and functionality over time.
- High corrosion-resistant wire mesh materials are tailored to endure exposure to aggressive agents, including acids, salts, alkalines, moisture, and high temperatures, making them crucial for applications in industries like marine, chemical processing, aerospace, food processing, and offshore operations.

PRODUCT PARAMETER	
Material	Monel: M400 M401 M404, Inconel: N600 N601 N625 N825 ,Hastelloy: C-22 C-276 B-2 B-3 Duplex Stainless Steel: 2205 2507, Super Stainless Steel: 904L
Woven style	Plain Weave, Twill Weave, Dutch Weave, Expanded, Crimped, Knitted etc.

» Product Show



Rare Metals Mesh

- Rare metals mesh refers to wire mesh made from metals that are classified as rare or less common in the Earth's crust but have exceptional properties, such as outstanding corrosion resistance, strength, and heat tolerance. These metals are typically used in industries where high-performance materials are needed under extreme conditions, such as aerospace, chemical processing, high-temperature applications, nuclear industries, and marine environments.

» Product Show

■ Tungsten Wire Mesh



■ Molybdenum Wire Mesh



■ Tantalum Wire Mesh



■ Zirconium Wire Mesh



■ Silver Wire Mesh



■ Platinum Gold Wire Mesh



■ Ruthenium Plated Iridium Titanium Wire Mesh



Iron Mesh Seris Product

- Most of them used for plastic project: screen belts and round mesh disc for continuous screen chargers(plastic extrusion), or buy roll mesh to cut by themselves.

PRODUCT PARAMETER	
Iron Mesh	1-80 mesh square mesh or crimped, dutch mesh normally is 12*64 14*88 24*110
Cu Coated Steel Mesh	Normally mesh belt specification is: 14*88 24*110 30*150 40*200. Normally the width is 230mm, 310mm, customized is available.

» Product Show

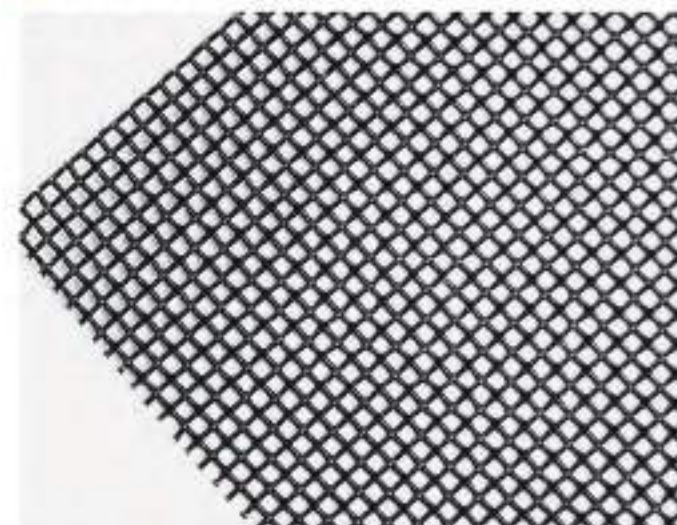


Epoxy Coated Mesh

- Epoxy Coated Mesh is a versatile and durable material commonly used in a variety of industrial applications, including oil pressure and air filtration systems.
- Specifications:** The most common epoxy wire mesh spec is 18 x 14 x 0.007 (18 in warp direction, 14 in weft direction, both wires with 0.007" diameter).
Basic Material or Raw Material: low carbon steel/ordinary steel wire/aluminium wire/stainless steel wire, epoxy powder(coated with epoxy coatings.)
Colour: Dark grey and black epoxy coating is the standard configuration, other colours can be customized, such as grey, white, blue, etc.

PRODUCT PARAMETER			
Substrate material	Specification	Width	Length
Q195	17x13/0.17	20mm-1300mm	30m-300m
Q195	18x14/0.18	20mm-1300mm	30m-300m
Q195	18x18/0.23	20mm-1300mm	30m-300m
Q195	12x10/0.25	20mm-1300mm	30m-300m
Q195	22x20/0.18	20mm-1300mm	30m-300m
Al5154A	18x16/0.24	20mm-1300mm	30m-300m
Al5154A	18x14/0.21	20mm-1300mm	30m-300m
5154A	14x14/0.41mm	0.72m-1.5m	30m
5154A	16x16/0.25mm	0.72m-1.5m	30m
304/316	18X14/0.21mm	0.72m-1.5m	30m

» Product Show



Further Wire Mesh Product

- Cechen - We specialize in providing high-quality custom stainless steel wire mesh tailored to meet your unique requirements. Whether you need a specific specification, weaving technique, or advanced processing, our experienced team is here to deliver solutions that exceed expectations.

■ Single Layer Round / Square Filter Disc



■ Multi-layer Filter Disc



■ Edged Filter Ring



■ Shaped Filter Disc



■ Cylindrical Filter Tube / Perforated Filter Tube



■ Custom-shaped Filter Cartridge



■ Mesh Strip

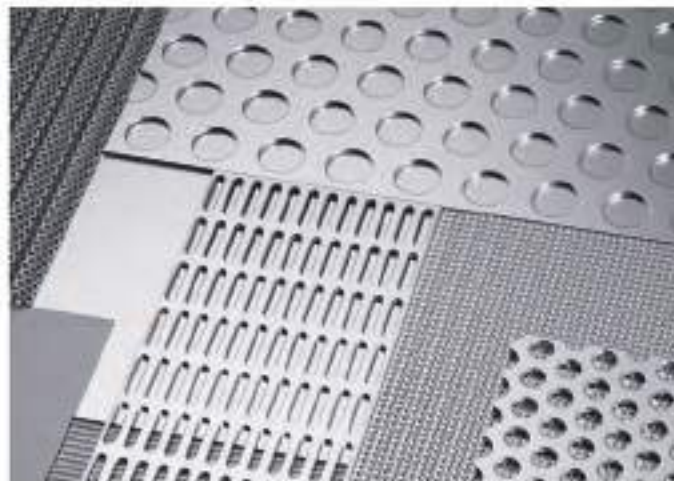


■ Crimped Wire Mesh



Other Wire Mesh

■ Angle Corner Mesh & Perforated Metal Mesh



■ Expanded Metal Mesh



■ Hexagonal Wire Mesh



■ Rope Net & Chain Link Fence



■ Decorate Wire Mesh



■ Plastic Flat Mesh & Nylon Polyester Mesh



Packaging And Transportation



CHEMICAL COMPOSITION (%)									
AISI	C Max	Mn Max	P Max	S Max	Si Max	Cr	Ni	Mo	Other Element
201	0.15	5.50/7.50	0.06	0.03	16.00-18.00	3.50-5.50	-	-	-
202	0.15	7.50/10	0.06	0.03	1.00	17.00-19.00	4.00-6.00	-	-
301	0.15	2.00	0.04	0.04	1.00	16.00-18.00	6.00-8.00	-	N 0.1
302	0.15	2.00	0.045	0.03	1.00	17.00-19.00	8.00-10.00	-	N 0.1
302HQ	0.03	2.00	0.045	0.03	1.00	17.00-19.00	9.00-10.00	-	CU3-4.0
303	0.15	2.00	0.045	≥0.15	1.00	-	8.00-10.00	-	-
304	0.08	2.00	0.045	0.03	1.00	18.00-20.00	8.00-10.00	-	-
304L	0.03	2.00	0.045	0.03	1.00	18.00-20.00	8.00-12.00	-	-
304H	0.04-0.10	2.00	0.045	0.03	1.00	18.00-20.00	8.00-11.00	-	-
308	0.08	2.00	0.04	0.03	1.00	18.00-21.00	10.00-2.00	-	-
308L	0.02	1.50-2.00	0.025	0.02	0.50	19.00-21.00	9.50-11.00	-	-
309	0.20	2.00	0.045	0.03	1.00	22.00-24.00	12.00-15.00	-	-
309S	0.08	2.00	0.045	0.03	1.00	22.00-24.00	12.00-15.00	-	-
310	0.25	2.00	0.045	0.03	1.50	24.00-26.00	19.00-22.00	-	-
310S	0.08	2.00	0.045	0.03	1.50	24.00-26.00	19.00-22.00	-	-
314	0.25	2.00	0.04	0.03	1.50-3.00	25.00-26.00	19.00-22.00	-	-
316	0.08	2.00	0.045	0.03	1.00	16.00-18.00	10.00-14.00	2.00-3.00	-
316L	0.03	2.00	0.045	0.03	1.00	16.00-18.00	10.00-14.00	2.00-3.00	-
316TI	0.08	2.00	0.045	0.03	1.00	16.00-18.00	10.00-14.00	2.00-3.00	Ti≥5C
317	0.08	2.00	0.045	0.03	1.00	18.00-20.00	11.00-15.00	3.00-4.00	-
317L	0.03	2.00	0.045	0.03	1.00	18.00-20.00	11.00-15.00	3.00-4.00	N:0.10-0.22
321	0.08	2.00	0.045	0.03	1.00	17.00-19.00	9.00-12.00	-	Ti:≥5C & Ti≤0.7%
410	0.15	1.00	0.04	0.03	1.00	11.50-13.50	-	-	-
416	0.15	1.25	0.06	≥0.15	1.00	12.00-14.00	-	-	-
420	0.16-0.25	1.00	0.04	0.03	1.00	12.00-14.00	-	-	-
410L	0.03	1.00	0.04	0.03	1.00	11.50-13.50	-	-	-
430	0.12	1.00	0.04	0.03	1.00	16.00-18.00	-	-	-
430F	0.12	1.25	0.06	≥0.15	1.00	16.00-18.00	-	-	-
2205	0.03	2.00	0.03	0.02	1.00	22.00-23.00	4.50-6.50	3.00-3.50	N:0.14-0.20
904L	0.02	2.00	0.045	0.035	1.00	19.00-23.00	23.00-28.00	4.00-5.00	CU:1-2