



ONCE BELIEVE, TRUST FOREVER!

SHANGHAI KATALOR COMPANY PROFILE



Shanghai Katalor Enterprises Co., Ltd

E-mail: info@katalor.com

Web: www.katalor.com

Tel: +86 21 61182423 Fax: +86 21 61182425

Registered Add: 1st Floor, Building No.1, No.221 Of Huashen Road,

Free Trade Area Of Pudong New District, Shanghai China

Office Add: Room 301, Unit 6, Lane 2500, Xiupu Road, Kangqiao Industrial Area,
Pudong New Area, Shanghai

THE INTRODUCTION OF COMPANY



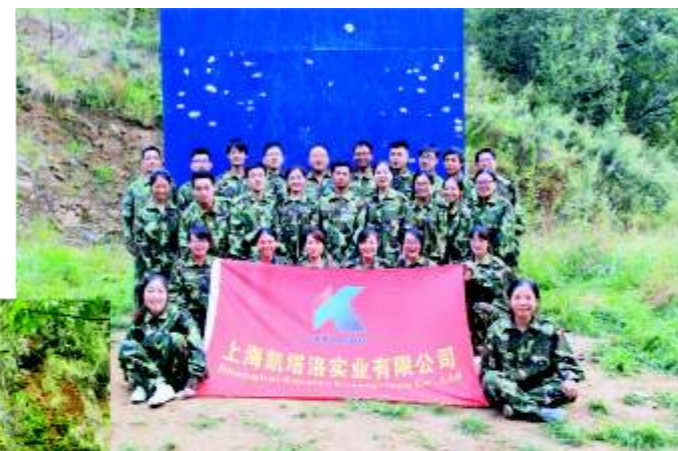
Shanghai Katalor Enterprises Co., Ltd is a big complex combined steel stockist whose business related with trade, processing, storage and transportation etc. Katalor Enterprises occupies a total area of more than 100,000 square meters warehouse and 500,000 tons steel stock, its steel processing and logistic base has the ability of processing and distributing up to 100,000 metric tons of steel annually with high efficiency. Equipped with advanced world class processing and storage facilities, Katalor Enterprises has reached annual sales quantity over 50,000 metric tons of steel and turn over 50 million USD.

Katalor Enterprises are mainly engaged in marketing and processing of various specifications of carbon steel coil, carbon steel plate, carbon steel pipe, carbon section steel, stainless steel coil, stainless steel plate, stainless steel pipe, stainless section steel. Not only offering the steel products, Katalor Enterprises but also can offer the steel processing service. Our steel processing service includes different types, firstly it is the steel surface treatment, such as steel pretreatment (shot blasting and shop primer), Sheet Galvanized, Steel Aluminized; secondly it is the steel structure work, such as cutting, drilling, milling, turning, bending, welding etc. We have the ability to produce every kind of steel structural parts. Thirdly, we can offer the heat treatment service, such as annealing, normalizing, hardening, tempering, hardening and tempering, solution treatment etc.

Katalor Enterprises has 5 big steel processing centers located in Shanghai City, Tianjin City, Qingdao City, Wuhan City and Nanyang City. Every processing center can process steel material 200,000 tons annually. So we have the capacity to process one million tons steel material one year. We can provide the machining parts, such as Steel structure of high building, Bridge steel structure, Electricity transmission tower, Wind tower, Boiler steel frame, Marine/Ocean oil platform steel structure/ steel work, Pressure vessels, Pipeline, Steel vestibule, Steel chimney, Steel structure for ship, Steel spare parts for machinery industry etc.

The processing centers in Shanghai, Tianjin and Qingdao are near by the sea port. It is very convenient to make the delivery and shipping. We can offer our own complete logistic system service include shipping, truck transportation and wharf, quickened the whole operation process. We lead the value-added new service concept and provide timely and quick service. Katalor Enterprises has passed the ISO9001:2008 quality system authentication and has always been implementing the ISO9001 Quality System and improving its after sales service network as well as trying its best to provide more convenient ,more accurate and more speedy service for all its clients.

Katalor Enterprises focuses on steel business both in international and domestic market. We have been working in the steel industry for more than 10 years. Now for catering to international steel market, we have exported our steel products to the customers from USA, South America, Europe, Africa, Southeast Asia and Mid-east etc. If we can have the good cooperation together, you will be very welcome to be our agent in your local market. We will give you the lowest price and best support to make your esteemed company to be the top class steel supplier and distributor. Join us, let' s work together!



FURTHER PROCESSING

▶ 1) MACHINING SERVICE

Service: CNC flame cutting, Plasma cutting, Laser cutting, Drilling, Milling, Turning, Bending, Welding
 Machining Products: steel plate, steel coil, steel pipe, section steel
 Machining size: Thickness or Diameter: 3mm to 400mm; Width: max 4500mm;
 Length: max 18000mm.
 Dimension Tolerance: As drawing request.
 MOQ: 1000KG



▶ 2) HEAT TREATMENT

Service: Annealing, Normalizing, Quenching/Hardening, Tempering, Quenching and Tempering (Q+T),
 Solution treatment + Picking
 Available Products: steel plate, steel coil, steel pipe, stainless steel sheet/coil/pipe
 Available Size: Thickness or Diameter: 3mm to 200mm; Width: max 3600mm;
 Length: max 12000mm



▶ 3) PRETREATMENT

Process: shot blast + shop primer
 Standard: shot blast according to ISO8501-1 SA2.5, shop primer ≥ 15 micron
 Usage: rust cleaning, rust protection



▶ 4) THIRD PARTY INSPECTION

We can arrange the LRS, ABS, BV, DNV, SGS, and TUV etc. to do the third party inspection.
 The inspection items include UT test, PMI test, Chemical composition test, Mechanical property test,
 Appearance inspection etc...



▶ 5) AFTER-SALES SERVICE

In case of any problems related with the steel products provided by Shanghai Katalor,
 we will follow up the complaints and offer the satisfied solutions to clients.

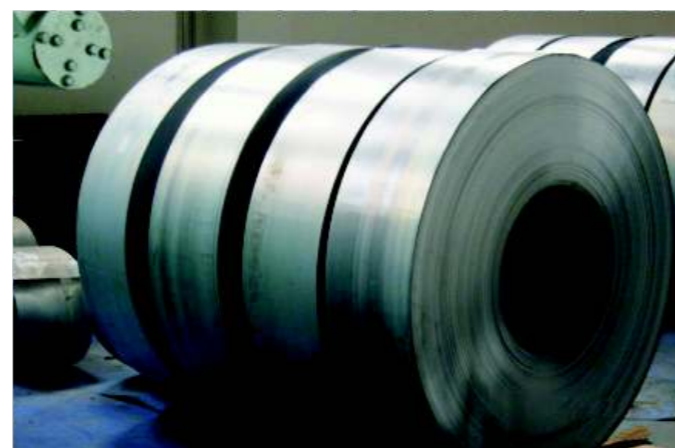


STEEL COIL/ STEEL STRIP /STEEL PLATE

STEEL COIL	Hot rolled, Cold rolled, Pickled and Oiled		
Thickness	0.3-25mm	Width	600-2000mm



STEEL STRIP			
Thickness	0.3-16mm	Width	30-600mm



STEEL SHEET/STEEL PLATE/CUTTING STEEL PLATE

Thickness	1-400mm	Width	30-4000mm	Length	1000-12000mm
-----------	---------	-------	-----------	--------	--------------

1. Carbon Construction Steel Plate

• Typical standard and steel grade:

EN 10025-2	S235JR, S235JO, S235J2, S235K2, S235J2G3
DIN 17100	St33, St37-2, St37-3U, St37-3N
ASTM	A36, A283GrA, A283GrB, A283GrC, A283GrD
JIS G3101	SS330, SS400, JIS3106: SM400A, SM400B, SM400C



2. High Strength and Low-alloy Steel Plate

• Typical standard and steel grade:

EN 10025-2	S275JR, S275JO, S275J2, S355JR, S355JO, S355J2, S355J2G3
EN 10025-3	S275N, S275NL, S355N, S355NL, S420N, S420NL, S460N, S460NL
DIN 17100	St44-2, RSt44-2U, RSt44-3U, St44-3N, St52-3, St52-3N.
ASTM	A572Gr42, A572Gr50, A572Gr55, A572Gr60, A572Gr65
JIS G3106	SM490A, SM490B, SM490C, SM490YA, SM490YB, SM520B, SM520C



3. Shipbuilding and Offshore Platform Steel Plate

• Typical standard and steel grade:

Classification Society	ABS, LR, BV, DNV, GL, NK, KR, RINA, CCS, GRA/GRB/GRD/GRE, AH32/DH32/EH32/FH32, AH36/DH36/EH36/FH36, AH40/DH40/EH40/FH40, API 2H GR42, API 2H GR50, API 2W GR50, API 2W GR60
------------------------	---



4. Boiler and Pressure Vessel Steel Plate

• Typical standard and steel grade:

EN 10028-2	P235GH, P265GH, P295GH, P355GH, 16Mo3, 13CrMo4-5, 10CrMo9-10
EN 10028-3	P275NH, P275NL1, P275NL2, P355N, P355NH, P355NL1, P355NL2, P460NH, P460NL1, P460NL2
DIN 17155	HI, HII, 17Mn4, 19Mn6, 15Mo3, 13CrMo44, 10CrMo910
ASTM	A285Gr.A, A285Gr.B, A285Gr.C; A516 Gr.55, A516 Gr.60, A516 Gr.65, A516 Gr.70; A537CL.1, A537CL.2, A537CL.3; A204Gr.A, A204Gr.B, A204Gr.C, A387Gr.2, A387Gr.12, A387Gr.11, A387Gr.22/22L, A387Gr.21/21L, A387Gr.5, A387Gr.9, A387Gr.91
JIS G3103	SB410, SB450, SB480, SB450M, SB480M



5. Atmospheric Corrosion Resistant Steel Plate

• Typical standard and steel grade:

EN 10025-5	S235J0W, S235J2W, S355J0W, S355J2W, S355K2W, S355J0WP, S355J2WP
ASTM	Corten A, Corten B, A588Gr.A, A588Gr.B, A588Gr.C, A242 Type1
BS 4360	WR50A, WR50B, WR50C
JIS G3125	SPA-H, SPA-C



6. Pipeline Steel Plate

• Typical standard and steel grade:

API 5L	Gr. A, Gr. B, X42, X52, X60, X65, X70, X80
EN 10208-2	L245NB, L290NB, L360NB, L415NB, L245MB, L290MB, L360MB, L415MB, L450MB, L485MB, L555MB



7. Automobile Structure Steel Plate

• Typical standard and steel grade:

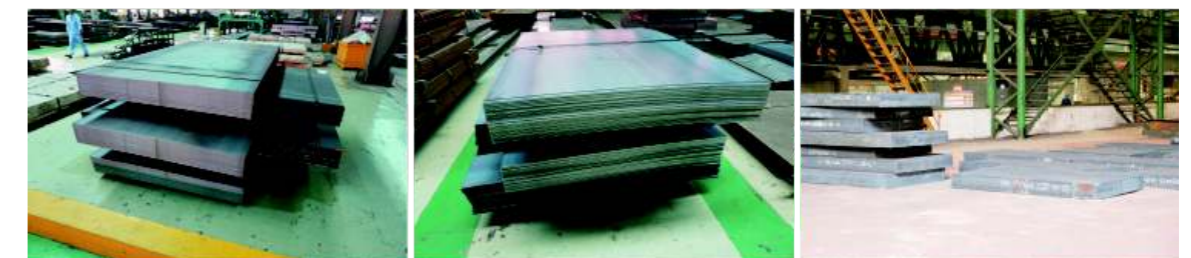
EN 10149	S315MC, S355MC, S420MC, S460MC, S500MC, S550MC, S600MC, S650MC, S700MC
ASTM	A607 Gr.45, Gr.50, Gr.55, Gr.60, Gr.65, Gr.70, Gr.80
JIS G 3113	SAPH310, SAPH370, SAPH400, SAPH440
Q/BQB310	QStE340TM, QStE380TM, QStE420TM, QStE460TM, QStE500TM



8. High Carbon Steel Plate

• Typical standard and steel grade:

EN 10083-2	C35, C40, C45, C50, C55, C60
UNE 36011	C35K, C45K, C55K
SAE J 403-AISI	1035, 1038 / 1040, 1042 / 1045, 1049 / 1050, 1055, 1060
Q/BQB310	S35C, S40C, S45C, S50C, S55C



9. Stamping/Cold forming Steel Plate

• Typical standard and steel grade:

En10111	DD11, DD12, DD13, DD14
SAE J403	SAE 1006, SAE 1008, SAE1010, SAE1020
JIS G3131	SPHC, SPHD, SPHE, SPHF



STAINLESS STEEL COIL/ STAINLESS STEEL PLATE

STAINLESS STEEL COIL		Hot rolled, Cold rolled			
Thickness	0.3-10mm	Width	600-2000mm		
STAINLESS STEEL PLATE					
Thickness	1-100mm	Width	1000-2500mm	Length	1000-12000mm

• Typical standard and steel grade:

EN 10088	X5CrNi18-10, X2CrNi19-11, X8CrNi25-21, X5CrNiMo17-12-2, X2CrNiMo17-12-2
ASTM A240/A240M	201, 202, 304, 304L, 309, 309S, 310, 310S, 316, 316L, 410, 410S, 420, 430, 444
JIS G 4304 JIS G 4305	SUS304, SUS304L, SUS316, SUS316L



SECTION STEEL

Product Type Angle Steel, H section, I beam, Channel Steel, Flat Bar, Sheet Pile

• Typical standard and steel grade:

ASTM	A283GrA/B/C/D, A36, A572Gr42/50/60/70
EN 10025	S235JR, S235JO, S235J2, S275JR, S275JO, S275J2, S355JR, S355JO, S355J2
JIS G 3106	SM400A/B/C, SM490A/B/C, SM490YA/B
JIS G 3101	SS 400, SS490
DIN 17100	St 37-2, St 37-3N, St 52-3N
ASTM A240	201/202, 304/304L, 316/316L, 321, 310/310S

Product Type Bulb flat, Angle steel, L Section for shipbuilding

• Typical standard and steel grade:

Classification Society	ABS, LR, BV, DNV, GL, NK, KR, RINA, CCS, GRA/GRB; AH32/DH32/EH32; AH36/DH36/EH36;
---------------------------	--



SQUARE HOLLOW SECTION/SQUARE TUBE/ SQUARE PIPE, RECTANGULAR HOLLOW SECTION/ RECTANGULAR TUBE/ RECTANGULAR PIPE

• Typical standard and steel grade:

ASTM	A500 A/B/C/D, ASTM A501 A/B
ASTM A240	201/202, 304/304L, 316/316L, 32, 310/310S
EN10219	S235JRH, S275J0H/S275J2H, S355J0H/S355J2H, S355K2H, S275NH/S275NLH, S355NH/S355NLH, S460NH/S460NLH
JIS G3466	STKR 400/STKR 41, STKR490/STKR 50



STEEL PIPE/STEEL TUBE/CIRCULAR HOLLOW SECTION

Product Type

Seamless Steel Pipe,
ERW (Electric Resistance Welding) Steel Pipe,
LSAW (Longitudinal Submerged Arc Welding) Steel Pipe,
SSAW (Spirally Submerged Arc Welding) Steel Pipe

• Typical standard and steel grade:

ASTM A312	TP304, TP304L, TP321, TP316, TP316L, TP309S
ASTM A790	S31803, S31500, S32550, S31200, S31260, S32304, S32520
A53	GRA, GRB
A106	GRA, GRB, GRC
A135	GRA, GRB
A139	GRA, GRB, GRC, GRD, GRE
DIN 1630	st37.4, st44.4, st52.4
DIN 17175	St35.8, St45.8, 17Mn4, 19Mn5, 15Mo3, 13CrMo44, 10CrMo910
EN10216-1/EN10217-1	P195TR1, P195TR2, P235TR1, P235TR2, P265TR1, P265TR2,
EN10216-2/EN10217-2	P195GH, P235GH, P265GH, 16Mo3
JISG3461	STB340, STB410, STB510
JISG3455	STS370, STS410, STS480
JISG3444	STK290, STK400, STK490, STK500, STK540



COOPERATIVE PARTNER

Katalor Enterprises focuses on steel business both in international and domestic market and caters to international capital market. With steel store, steel processing, logistics as its main aim, it has established long term relationship with China famous steel mills. We now are the agent of Baoshan iron & Steel Co. Ltd (BaoSteel), Shougang Goup, HBIS, Anshan Iron and Steel Group (Ansteel), Anyang Iron & Steel Group Co., Ltd (Anyang steel), Xinyu Iron & Steel Co. LTD, Taiyuan Iron & Steel (Group) Company LTD (TISCO), Shandong Iron & Steel Co., Ltd, Jinan Company (Jigang), Benxi Steel Group, Chongqing Donghua Special Steel, Baotou Iron & Steel (Group) Co. Ltd, LY (Lian Yuan Steel), Nanjing Iron & Steel Co. Ltd (NISCO), Wuhan Iron and Steel (Group) Company (WISCO), Tangshan Iron & Steel (Group) etc. We face market and customers actively with the principle of "Taking quality as life line and service as the basis". We were awarded good reputation as "Shanghai Top Hundred Steel Sales Cooperation" in 2015 and "Shanghai 50 Excellent Cooperation of Steel Marketing" etc. If you cannot find the steel products you need in our ex-stock center, we can offer the future goods to you in very short delivery time and favorable price.



THE COUNTRIES WE EXPORTED

AFG 阿富汗 Afghanistan		GHA 加纳 Ghana		NRU 瑙鲁 Nauru	
ALB 阿尔巴尼亚 Albania		GNB 几比 Guinea-Bissau		NZL 新西兰 New Zealand	✓
ALG 阿尔及利亚 Algeria	✓	GRE 希腊 Greece		OMA 阿曼 Oman	✓
AND 安道尔 Andorra		GRN 格林纳达 Grenada		PAK 巴基斯坦 Pakistan	✓
ANG 安哥拉 Angola		GUA 危地马拉 Guatemala		PAN 巴拿马 Panama	✓
ARG 阿根廷 Argentina	✓	GUI 几内亚 Guinea		PAR 巴拉圭 Paraguay	✓
ARM 亚美尼亚 Armenia		GUY 圭亚那 Guyana	✓	PER 秘鲁 Peru	✓
AUS 澳大利亚 Australia	✓			PHI 菲律宾 Philippines	✓
AUT 奥地利 Austria		HAI 海地 Haiti		PLE 巴勒斯坦 Palestine	
AZE 阿塞拜疆 Azerbaijan		HON 洪都拉斯 Honduras	✓	PLW 帕劳 Palau	
BAH 巴哈马 Bahamas		HUN 匈牙利 Hungary		PNG 巴新 Papua New Guinea	
BAN 孟加拉国 Bangladesh	✓			POL 波兰 Poland	✓
BAR 巴巴多斯 Barbados		IND 印度 India	✓	POR 葡萄牙 Portugal	
BEL 比利时 Belgium		INA 印尼 Indonesia	✓	PRK 朝鲜 Korea	
BEN 贝宁 Benin		IRI 伊朗 Iran	✓	QAT 卡塔尔 Qatar	✓
BDI 布隆迪 Burundi		IRL 爱尔兰 Ireland		RMI 马绍尔群岛 Marshall Islands	
BHU 不丹 Bhutan		IRQ 伊拉克 Iraq		ROM 罗马尼亚 Romania	
BIH 波黑 Bosnia and Herzegovina		ISL 冰岛 Iceland		RSA 南非 South Africa	✓
BIZ 伯利兹 Belize		ISR 以色列 Israel	✓	RUS 俄罗斯 Russia	✓
BLR 白俄罗斯 Belarus		ITA 意大利 Italy	✓	RWA 卢旺达 Rwanda	
BOL 玻利维亚 Bolivia				SAM 萨摩亚 Samoa	
BOT 博茨瓦纳 Botswana		JAM 牙买加 Jamaica		SCG 塞尔维亚和黑山 Serbia & Montenegro	✓
BRA 巴西 Brazil	✓	JOR 约旦 Jordan		SEN 塞内加尔 Senegal	
BRN 巴林 Bahrain	✓	JPN 日本 Japan		SEY 塞舌尔 Seychelles	
BRU 文莱 Brunei	✓			SIN 新加坡 Singapore	✓
BUL 保加利亚 Bulgaria		KAZ 哈萨克斯坦 Kazakhstan	✓	SLE 塞拉利昂 Sierra Leone	
BUR 布基纳国 Burkina Faso		KEN 肯尼亚 Kenya	✓	SLO 斯洛文尼亚 Slovenia	✓
CAF 中非 Central African Republic		KGZ 吉尔吉斯斯坦 Kyrgyzstan		SMR 圣马力诺 San Marino	
CAM 柬埔寨 Cambodia	✓	KIR 基里巴斯 Kiribati		SOL 所罗门群岛 Solomon Islands	
CAN 加拿大 Canada		KOR 韩国 Korea	✓	SOM 索马里 Somalia	
CHA 乍得 Chad		KSA 沙特阿拉伯 Saudi Arabia	✓	SRI 斯里兰卡 Sri Lanka	✓
CGO 刚果 Congo		KUW 科威特 Kuwait	✓	SUD 苏丹 Sudan	
CHI 智利 Chile	✓	LAO 老挝 Laos		SUI 瑞士 Switzerland	
CIV 科特迪瓦 Cote d'Ivoire		LAT 拉脱维亚 Latvia		SUR 苏里南 Suriname	
CMR 喀麦隆 Cameroon		LBA 利比亚 Libya		SVK 斯洛伐克 Slovakia	
COD 刚果(金) Congo (Kinshasa)		LBR 利比里亚 Liberia		SWZ 斯威士兰 Swaziland	
COL 哥伦比亚 Colombia		LCA 圣卢西亚 Saint Lucia		SWE 瑞典 Sweden	✓
COM 科摩罗 Comoros		LES 莱索托 Lesotho		SYR 叙利亚 Syria	✓
CPV 佛得角 Cape Verde		LIB 黎巴嫩 Lebanon		TAN 坦桑尼亚 Tanzania	✓
CRC 哥斯达黎加 Costa Rica	✓	LIE 列支敦士登 Liechtenstein		TGA 汤加 Tonga	
CRO 克罗地亚 Croatia	✓	LTU 立陶宛 Lithuania	✓	THA 泰国 Thailand	✓
CUB 古巴 Cuba		LUX 卢森堡 Luxembourg		TJK 塔吉克斯坦 Tajikistan	
CYP 塞浦路斯 Cyprus		MAD 马达加斯加 Madagascar	✓	TKM 土库曼斯坦 Turkmenistan	
CZE 捷克 Czech	✓	MAR 摩洛哥 Morocco		TLS 东帝汶 East Timor	
DEN 丹麦 Denmark	✓	MAS 马来西亚 Malaysia	✓	TOG 多哥 Togo	
DJI 吉布提 Djibouti		MAW 马拉维 Malawi		TRI 特立尼达和多巴哥 Trinidad and Tobago	✓
DMA 多米尼克 Dominica		MDA 摩尔多瓦 Moldova		TUN 突尼斯 Tunisia	
DOM 多米尼加 Dominican Republic		MDV 马尔代夫 Maldives	✓	TUR 土耳其 Turkey	✓
ECU 厄瓜多尔 Ecuador	✓	MEX 墨西哥 Mexico	✓	TUV 图瓦卢 Tuvalu	
EGY 埃及 Egypt	✓	MGL 蒙古 Mongolia		UAE 阿联酋 United Arab Emirates	
ERI 厄立特里亚 Eritrea		MKD 马其顿 Macedonia		UGA 乌干达 Uganda	
ESA 萨尔瓦多 El Salvador		MLI 马里 Mali		UKR 乌克兰 Ukraine	✓
ESP 西班牙 Spain	✓	MLT 马耳他 Malta		URU 乌拉圭 Uruguay	
EST 爱沙尼亚 Estonia		MON 摩纳哥 Monaco		USA 美国 United States of America (USA)	✓
ETH 埃塞俄比亚 Ethiopia		MOZ 莫桑比克 Mozambique		UZB 乌兹别克斯坦 Uzbekistan	✓
FIJ 斐济 Fiji		MRI 毛里求斯 Mauritius		VAN 瓦努阿图 Vanuatu	
FIN 芬兰 Finland		MTN 毛里塔尼亚 Mauritania		VAT 梵蒂冈 Vatican City	
FSM 密克罗尼西亚 Micronesia		MYA 缅甸 Myanmar	✓	VEN 委内瑞拉 Venezuela	✓
FRA 法国 France	✓	NAM 纳米比亚 Namibia		VIE 越南 Vietnam	✓
GAB 加蓬 Gabon		NEP 尼泊尔 Nepal		YEM 也门 Yemen	
GAM 冈比亚 Gambia		NCA 尼加拉瓜 Nicaragua		ZAM 赞比亚 Zambia	✓
GBR 英国 United Kingdom	✓	NED 荷兰 Netherlands	✓	ZIM 津巴布韦 Zimbabwe	
GEO 格鲁吉亚 Georgia		NGR 尼日利亚 Nigeria	✓		
GEQ 赤几 Equatorial Guinea		NIG 尼日尔 Niger			
GER 德国 Germany	✓	NOR 挪威 Norway			