

**INTRODUCTION**



**Corporate Profile**

Green Vitality Industry Co., Limited was established in July 1993. We are a foreign-funded enterprises registered in Hong Kong. At first time, the whole company was composed of a team only owning 16 people. In 1998, we have established a branch office in Shenzhen. Then the first plastic mold factory was found in Shenzhen Fuyong in 2000. Besides, in 2007, a new factory named Hui Hai was established in the nearby city of Dongguan. The two factories were merged into this large one as you see at the same year. In the end of 2013, as for the necessary of development, we expanded the factory, new plane relocation to Dongguan ChangAn, and renamed Jing Fu. Nowadays, in total, Green Vitality facilities occupy over 8,000 square meters. We have over 100 employees including more than 30 designers, engineers, business managers and customer support staff members. We can produce nearly 600 set molds to deliver to throughout the world per year.

**Factory Profile:**  
6000 square meters mold making workshop, 8,000 square meters injection workshop.  
With 160 employees, including 20 engineers, mold maker 65 people, injection molding 60 people.

**Factory Capability:**  
40 molds per month (Max.)  
Max. mold size 3200x2200mm, Max. mold weight 25 ton.

**Service Scope:**  
Expert in Auto Parts, Aero parts and Household Appliance large plastic molds  
Plastic parts injection  
Prototype parts

**Market Advantage:**  
Top quality mold and plastic parts  
Reliable service

**GVI Advantages**

- + Our limit is 3.2 meters in length and 15 metric tons in weight. In China most factories have lower limit, both in length and in weight.
- + Precision at 0.005mm for molds, and 0.01mm for molded products.
- + ISO9001 Certified & over 20 years rich experience ensure customers enjoy good quality, competitive price and One-Stop Service.

**Service Range**

+ We provide services includes : new product development, structure design, mold design, prototype fabrication, plastic injection mold manufacture, die casting mold manufacture, plastic parts injection. In addition, as for dustless auto painting, electroplating, silkscreen, and product assembly, we usually outside to partner factory to provide service to our customers.

+ The mainly sectors of our production mold for audio and video system, consumer electronics, telecommunication, plastic toy, household appliance, office and medical equipment, automotive and industry, etc.



01

02

**MOLD ENGINEERING**

Scientific and outstanding mold design is half of a successful mold.



**Design / Programming / Engineering**

Mold designers and programming engineers create delicate molds designs according to the unique character of products. **During** the process of mold design and CNC programming, engineers pay special attention to how to combine scientific, rational-reliable and practical factors into product design. Our engineers adopt advanced design software, such as UG, Pro-E, Solidworks, Auto CAD etc., to perfectly embody customers' concept into the product structure design. After conquering all sorts of technology difficulties time and time again, marvelous product structure designs are offered to customers.

**Manufacturing / Injection / Finish**

Mold Manufacturing Department owns precision manufacturing equipment and skillful workers. To improve the precision manufacturing ability, over 30 sets of updated and advanced equipment have been imported. Now, our mold manufacture ability has totally compliant with international standards of mold industry. Based on the mold complexity, 50 sets of molds can be made per month.

**Value-added service**

- Green Vitality offers value-add assembly and will integrate plastic and metal to provide complete products to the industry after finished parts. Our goal is to be a one-stop shop, providing management of this program through our Technology and Costing Teams. Our purchasing and inventory management provide the lowest cost product to support your requirements if needed.

- Green Vitality works with its suppliers to procure sub-components using Just-in-Time, or consignment programs to insure continuous products flow. We offer warehousing programs on or off-site to support your products, and would evaluate the leasing of space close to your end-of-use facility to further support your requirements.

All engineers in Green vitality Industry have an educational background of Bachelor or above, they specialized in plastic mold design, mold flow analysis and have dedicated themselves in mold making for 5 to 10 years. They are very skillful in using 2D or 3D software such as UG, Pro/E, CATIA, Auto-CAD, and also familiar with HASCO, DME mold standards. They have extensive and practical experiences in designing and manufacturing of Automotive, Aerospace, House appliance molds. For each project, during the mold quotation stage, our engineer role as a consultant, discuss with customer and provide suggestion of mold steel choice, quality control, cost benefit, assist customer find the most optimum mold solution. Before mold marking, they are good at analyzing product structure, simulation analysis is carried out to forecast potential problems and prevent it from happening by using mold flow, which significantly improve mold construction and product appearance. During the mould manufacturing stage, the project engineer supervise and track every mould manufacturing process, they not only do the engineers and managers perform professionally in technical issues, but also English, this barrier-free communication removes the language obstacles and ensures customer requirements are implemented into the molds completely. In the way , almost come true getting the right sample during the first mold tryout.



01

02

**MOLD MANUFACTURING EQUIPMENTS**



01

02

**MOLD MANUFACTURING EQUIPMENTS**

**INJECTION EQUIPMENTS**



With scientific mold design, advanced technology, careful manufacturing and humanized service, Green vitality Industry can achieve and exceed our customers' expectation. We employ 65 senior and experienced mold makers, they familiar with HASCO and DME standard mold components, and are trained to operate each process of mold manufacturing and strictly control the manufacturing time for delivery guarantee. We own a modern garden factory of 6000 square meters and advanced mold process equipments, these equipments enable us to provide our customers with special solution of high precision and tight machining precision and punctuality delivery for our valuable customers.

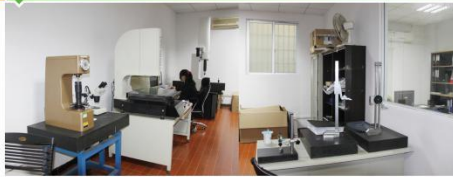
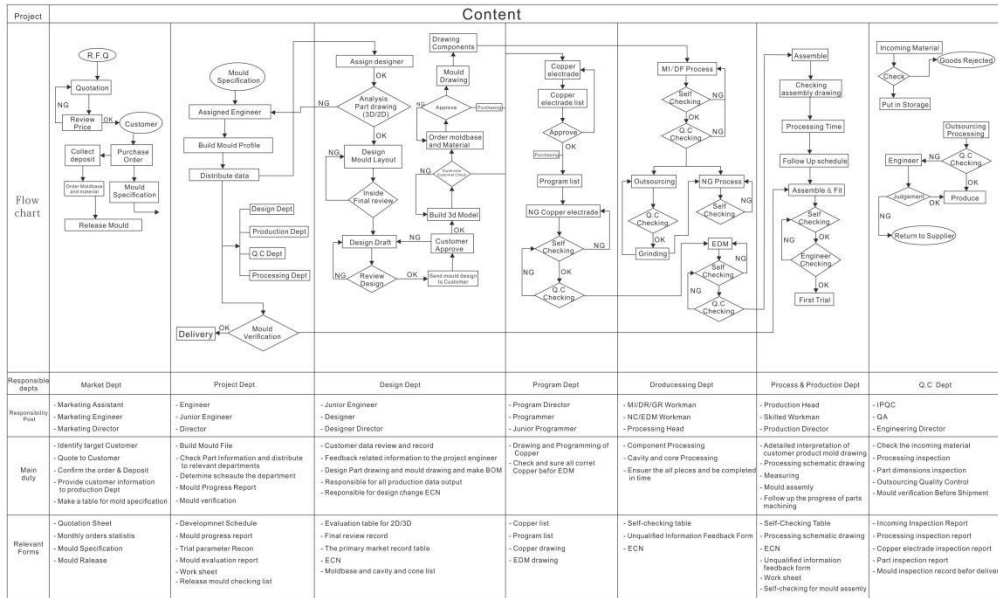
With the in-house injection molding department guarantees the required process reliability, short testing time and cost saving. Our people possess rich knowledge and experience in a wide variety of injection molding technologies and production methods to assist customers in transforming innovative ideas to reality. Green vitality Industry own more than 30 sets of various specification injection machines, ranging from 88 to 2800 tonnage, including 1000 tonnage (2sets), 1200 tonnage (1 set), 1300 tonnage (1 set), 1600 tonnage (1 set), 2000 tonnage (1 set) and 2800 tonnage(1 set). The maximum workable mold weight reach to 30 tonnages, the plastic parts in weight vary from 5.0g to 15kgs. The main molded plastic products for mass production we done are large-size bumper, side door, LED TV cover, printer cover, aircraft seat, industrial filtration products and so on. Our senior and experienced injection operators know the performance and characteristics of plastic material very much, such as ABS, PC, PMMA, PA, PA6, PET, PBT, PP, PS, PEI, PEEK etc.

Description	Brand	Model	Specification	Qty	Supplier	Remark
CNC Machining Center	KaFo	B-3122	3100*2200*1300	1	Tai Wan	Great Longmen
	Hurford	HB-3150	3000*1970*920	1	Tai Wan	Great Longmen
	Lokahun	CNC 1560	1500*600	1	Tai Wan	
	Lokahun	CNC 1270	1200*700	2	Tai Wan	
HS CNC Machining Center	Lokahun	CNC 650	600*500	2	Tai Wan	
	PollexMachine	CNC 600	600*500	2	Tai Wan	
	Jiatie	CNC 500	500*350	2	Tai Wan	
EDM Machine	HSPK	He1800	1800*1000	1	Shanghai	Two-Head
	Hua Fong	ZNC540	500*400	3	Tai Wan	
	Hua Fong	ZNC430	400*300	3	Tai Wan	
Wire Cut Machining	Hai zhu	430	800*600	3		
			400*300	3		
Drilling Machine	Jing zhu	1500	1500	1	China	
	Jing zhu	1300	1300	1	China	
Milling Machine	Jing zhu	200-600	200-600	10	China	
	Ying shun	MSM3		10	China	
Grinding Machine	Ying shun	/		4	China	
	Jing zhu	/	M2-M50	2	China	
Tapping Machine	LH Type	20T/ST		1	China	
	LD Type	10T		3	China	
Travelling Crane	Hai Tian	JM160/JM218/JM388		3	Hong Kong	For mold trial
Injection Machine	CMM	FLY654	500*600*400mm	1	Xi'an	
Testing Tool	Projector			1		
	Quadratic element(two-dimension)			1		
	Depth/Height/Hardness gauge			30		

01

Machine No.	Brand	Type	Clamp Tonnage(Ton)	Space Between Tie Bars(mm)	Mold Height(mm)	Injection Weight(mm)	Updated Date
1	HAITIAN	HTF2800	2800	2300*2000	900-2100	18000	2014
2	HAITIAN	HTF2000	2000	1650*1500	780-1560	10200	2007
3	HAITIAN	HTF1600	1600	1350*1300	650-1450	9000	2014
4	HAITIAN	HTF1300	1300	1250*1200	600-1350	7800	2014
5	HAITIAN	HTF1200	1200	1200*1200	560-1300	5500	2014
6	HAITIAN	D1000C	1000	1160*1160	500-1200	3000	2008
7	HAITIAN	HTF1000	1000	1200*1200	550-1180	4500	2014
8	HAITIAN	HTF780X	780	980*980	400-980	3200	2012
9	HAITIAN	HT1600W2	600	880*680	380-880	2300	2008
10	HAITIAN	HT1500W2	500	820*600	300-800	1500	2010
11	HAITIAN	HT1300W2	300	730*730	280-730	1200	2012
12	Zhen Xiong	JM368-C/ES	368	740*740	300-740	1100	2013
13	Zhen Xiong	JM368-C/ES	368	740*740	300-740	1100	2010
14	Zhen Xiong	JM368-C/ES	368	740*740	300-740	1100	2011
15	YAN XING	YAN XING 350	350	710*660	340-650	1000	2011
16	Zhen Xiong	YAN XING 350	350	710*660	340-650	1000	2012
17	Zhen Xiong	JM268-C/ES	268	560*560	200-640	800	2008
18	Zhen Xiong	JM268-C/ES	268	560*560	200-640	800	2009
19	Zhen Xiong	JM268-C/ES	268	560*560	200-640	800	2012
20	Zhen Xiong	JM268-C/ES	268	560*560	200-640	800	2013
21	Zhen Xiong	JM200-C/ES	200	520*450	200-500	500	2009
22	Zhen Xiong	JM200-C/ES	200	520*450	200-500	500	2012
23	Zhen Xiong	JM168-C/ES	168	460*410	220-470	330	2011
24	Zhen Xiong	JM168-C/ES	168	460*410	220-470	330	2012
25	Zhen Xiong	JM128-C/ES	128	410*360	175-400	280	2010
26	Zhen Xiong	JM128-C/ES	128	410*360	175-400	280	2012
27	HAITIAN	HFT128	128	400*360	180-410	250	2012
28	Zhen Xiong	JM120-C/ES	120	410*370	180-410	200	2010
29	Zhen Xiong	JM88-C/ES	88	360*310	360*310	98	2009
30	Zhen Xiong	JM88-C/ES	88	360*310	360*310	98	2013

02



Green Vitality Industry Co., Limited keeps "Quality First and Service First" as the working standard.

- \* Quality control becomes the major component of each machining project in Green Vitality, moreover the quality control procedure and management system are strictly carried out according to ISO9001 system. In-process inspection procedure, our self-owned accurate measuring & testing equipment allow the strong Q.C team to check all components after machining and before assembly.
- \* Before we deliver the products to customers, each of us will pass related quality inspection process in order to achieve the perfect standard.
- \* Continually maintaining and improving the effectiveness of our quality management system.
- \* Periodic review of current quality policy and objectives to ensure its effectiveness and suitability.



Quality First and Service First is our pledge. In order to serve and support our clients better, we would establish a special team called Technology and Cost Team. So Best Practice (top quality and competitive price) will be submitted to you in the shortest time. Green vitality sincerely welcomes you and hopes to be the most suitable and steadfast partner of you.

High quality maintains the survival of Green vitality Industry. We strictly follow the requirements and principles of ISO9001:2008 quality management system in our whole process. We own well-trained inspectors and full-set testing equipments such as CMM, VVM, measuring projector, altitude detector, hardness tester, Which ensure the superior quality of mold and plastic parts.

- We promise, and we do!**
- Our quality management system include:
1. Strictly control every process
  2. Well-trained inspectors
  3. Full set testing equipments
- Documentation**
1. The certification of steel and hardness
  2. The dimensional report
  3. The checking list before mold shipping



MOLD DISPLAY

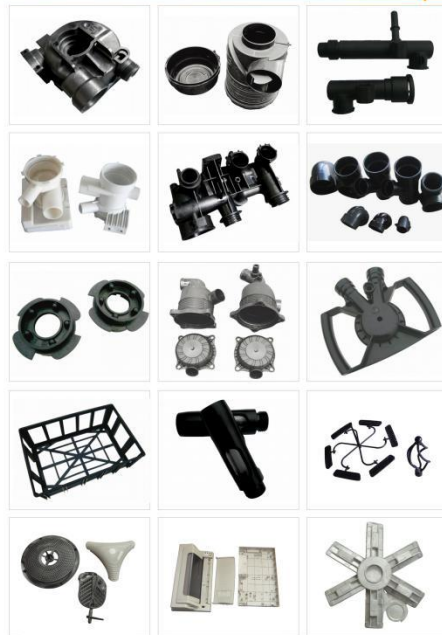


Auto Parts



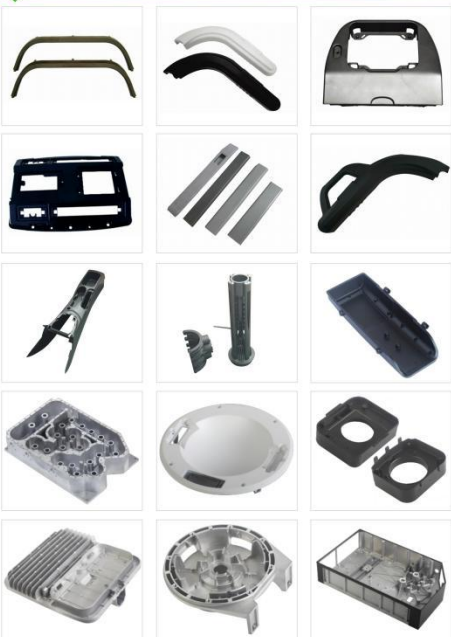
01

INDUSTRIAL PRODUCTS



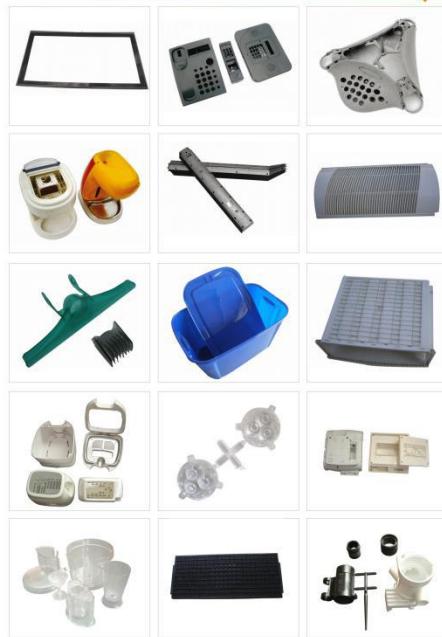
02

Aero Parts



01

Household Appliances



02

Thanks for your reading!