

Overview

Quick Details

Place of Origin: Zhejiang, China (Mainland)
Brand Name: Ehase-flex
Model Number: EH-800H
Type: Lateral Movement Compensator Expansion Joint
Material: Stainless Steel, SUS304, 316, 321
Technics: welding
Connection: Flange
Shape: Equal
Head Code: Round
Size: DN15-DN2000
Temperature: Max.1000°C
Rated Working Pressure: 10bar, 16bar, 25bar,40bar, 60bar, 100bar
Lateral Movement: 25mm or According to Requirement
Flanges Standard: JIS, ANSI, DIN, BS, JB...
Design Standard: EJMA
Application: Lateral Movement Compensator Expansion Joint
Certificate: ISO
OEM/ODM: Allowed

Supply Ability

Supply Ability: 7000 Piece/Pieces per Month HS Code: 7307.99

Packaging & Delivery

Packaging Details

Carton Box, Pallet, or Plywood Case

No Unacceptable Packaging Material or Bamboo Products been Used as Packing

Port Shanghai or Ningbo or Any Port in China

Lead Time :Normally 20 Days; Depends on Customer's Requirement

Product Description

Metal Expansion Joint for Lateral Movement Compensator

100% Tested Before Delivery

OMEGA Bellows, more flexible, longer service life

More than 40-year experience in manufacturing

It should be installed offset to absorb the movement. When installed, it must be at the fully extended length and at **90° to the line of movement**. Tie tie rods **can't be** adjusted or removed to ensure the proper functioning of the unite.

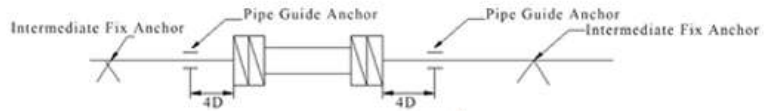
Application

1. One Plane System:

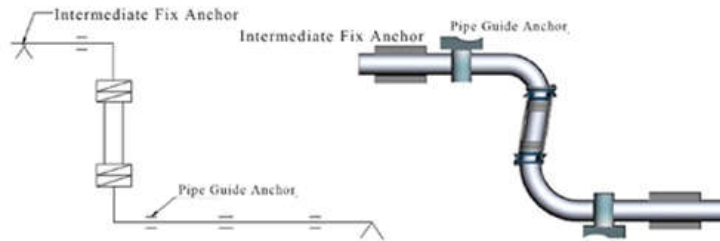
It can be instead of two hinged joints to absorb the movement

2. Two Planes System:

It can be instead of two gimbal joints. Maybe used in the offset pipe as shown.



Type 1: Level Piping



Type 2: Z or L Piping

Construction

ITEM	PARTS	MATERIAL	REMARK
1	Bellows	SUS304	SUS316/321
2	Flanges	SS400	SUS304/316/321
3	Tube End	SS400	SUS304/316/321
4	Tie Rods	SS400	SUS304/316

Specification

Nominal Bore		Total Length to ± 25 mm Lateral Mvmt	Bellows O.D.	Force to Deflect Max	Length Added for Each Extra ± 25 mm	Rated Working Pressure kg/cm ²	
mm	ins	mm	mm	kg	mm	EH-800	EH-800H
50	2	600	76	4.0	210	10	16
65	2 1/2	600	92	10.6	210	10	16
80	3	700	106	8.1	210	10	16
100	4	700	133	8.9	210	10	16
125	5	750	163	28.7	210	10	16
150	6	750	190	37.7	210	10	16

200	8	800	252	73.3	210	10	16
250	10	800	315	165	240	10	16
300	12	1000	366	205	360	10	16
350	14	1000	396	266	360	10	16
400	16	1000	460	432	360	10	16
500	20	1200	561	470	480	10	16
600	24	1200	663	791	480	10	16

*Specifications stated above are the standard. We can design and manufacture according to customer's requirement

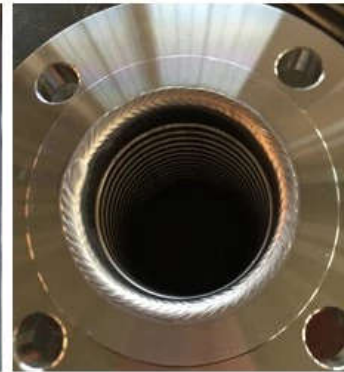
*Flange Standard: JIS, ANSI, DIN, B.S. JB etc

Features

1. Excellent Welding Technology, like a fish swimming in water.
2. Omega Bellows, More flexible and longer service life.

**Fish-scale,
Smooth Welding**

**No Welding Defects,
No Chance of Leakage**

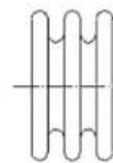


**Omega Bellows
Without the Disadvages of
Stress Concentration.**

Softer and Longer Service Life



Omega Bellows



**Stress Concentrating
on the point**

U-Type Bellows

Production Process

Production Capacity

Flexible Sprinkler Hoses: 350,000pcs per Month

Flexible Joints/ Expansion Joints: 80,000pcs Annual

Gas Connector: 300,000pcs Per Month

Water Connectors: 5,000,000m Annual



Material: Stainless Steel Tape



Material: Flanges



Material: Stainless Steel Tubes



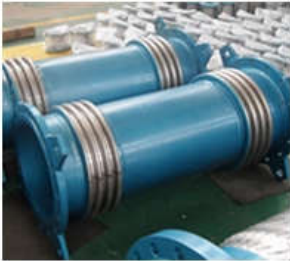
Bellows Shaping



Welding



Semi-Finished Products



Expansion Joint



Expansion Joint



Expansion Joint

Testing

100% Before Delivery



Raw Material Inspection



Bellows Verticality Inspection



Bellows Shaping Inspection



Dimensional Inspection



Paint Thickness Inspection



Leakage Test

Packaging & Shipping

Carton Box, Pallet, or Plywood Case

No Unacceptable Packaging Material or Bamboo Products been Used as Packing



Pack Each Product Separately by Foam Sheet



Type 1: Carton Box with Pallet



Type 2: Plywood Case

Company Information

Certifications



FM Approved: Flexible Joint, Expansion Joint, Flexible Sprinkler Hose



UL Listed: Flexible Sprinkler Hose



CSA Certified: Gas Connector



CCC Certified Flexible Sprinkler Hose



Chinese Quality of Class Certificate

Our Customer

ECHASE-FLEX



Company Overview

ECHASE-FLEX



Ehase-Flex company located in Hangzhou, near Shanghai and Ningbo port, with more than 40 year experience, is one of the most famous brand in metal flexible joint and expansion joint in Taiwan. We are specialized in manufacturing flexible joint, expansion joint, flexible sprinkler hose, flexible tube, gas connector, rubber joint. Our company had obtained the quality control system I S O 9 0 0 1. Our products are F M, C C C, C S A, S G S approved and 1 0 0 % tested before delivery.....



Office



Laboratory



Automatic Welding



Corrugated Pipe Machine



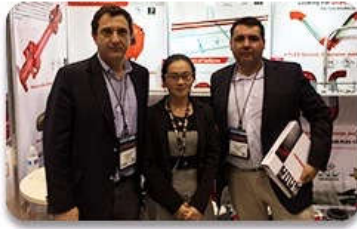
Braiding Machine



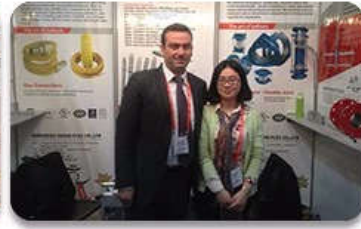
Warehouse



AHR USA



NFPA USA



THE INTERSEC Dubai

- High producing capacity with timely delivery. Normally, less than 25 working days.
- Professional researching, developing team and equipments, can design and manufacture as customers' requirements.
- After-Sales promise is respond within 4 hours and reach the site within 48 hours for domestic user, respond within 6 hours for overseas user.

FAQ

Q : Are you trading company or manufacturer?

A: We are **manufacturer of** expansion joint, flexible joint, flexible sprinkler hose, flexible tube, corrugated gas connector, spring absorber with more than **40-year experience**.

Q: Do you have products catalog?

A: Yes, we have. Please tell me your email or instant messenger, we will send our catalog.

Q: Can you provide drawings and technical data?

A: Yes, our professional technical department will design and provide drawings and technical data.

Q: Do you provide samples? Is it free or charged?

A: Yes, we can offer sample free but shipping charges covered by customer.

Q: Have your products been exported?

A: Yes, they have been exported to USA, France, Australia, Peru, Chile, Brazil, Uruguay, Russia, UAE, Saudi Arabia, Oman, Egypt, Kenya, Serbia, Vietnam, South Korea, Indonesia, India, Thailand, Pakistan, Philippines, Singapore, HK...

Q: How long is your delivery time?

A: Depends on QTY, but normally no more than 20 working days.

Q: Can the products be manufactured by customer's requirement?

A: Yes, the specifications stated above are the standard ones, we can design and manufacture as requirement.

Q: Visting company is allowed or not?

A: Yes, we welcome customers visiting our company. We are located in Hangzhou, Zhejiang Prov., China

Contact Us

EHASE-FLEX



HANGZHOU EHASE-FLEX CO., LTD

🏠 No. 268 Tangkang Rd., Yuhang, Hangzhou,
Zhejiang Prov., China

☎ 86-571-87176348

📠 86-571-87858048

🌐 <http://www.ehaseflex.com>

✉ sales@ehaseflex.com

📱 ehaseflexjoint

📞 +86-18058813641