



TANGIBLE MINERALS

MINING | MINERAL | EXPLORATION

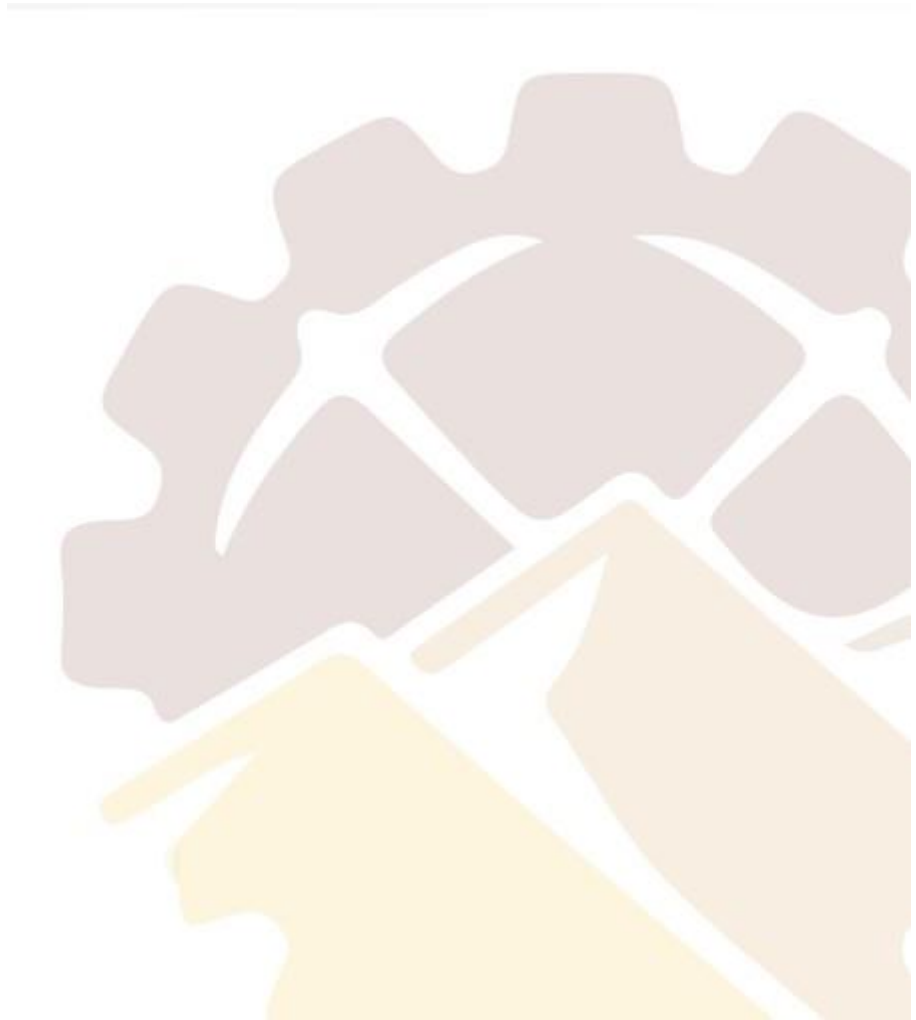


COPPER MINE MAKONDE

COPPERMINE PREAMBLE

INTRODUCTION

Tangible Minerals Pvt Ltd intends to mine copper within the vicinity of the special grant. The area falls within RA MSW 004 in Kenzamba under map No. 1729 BC2 Our Mine is a virgin mine but is surrounded by historically mined Copper/Gold mines. The mine was formerly called Flame Lilly claims, which were not mined because of the Zimbabwe civil war. The mine is extremely rich giving an average of 13% Copper and 10.8 g/t of Gold.



Significant copper production was from Alaska Mine, Gondia Mine, Crescent Mine and North Star Mine. Recorded copper production started earlier than 1916. Numerous other companies registered claims and mined copper within the area and recovered gold as a by-product. These included Norman Mine, Wealth Mine, Montana Mine, Mookwe Copper claims to mention but a few. The regional geology setting is shown in Figure 3.

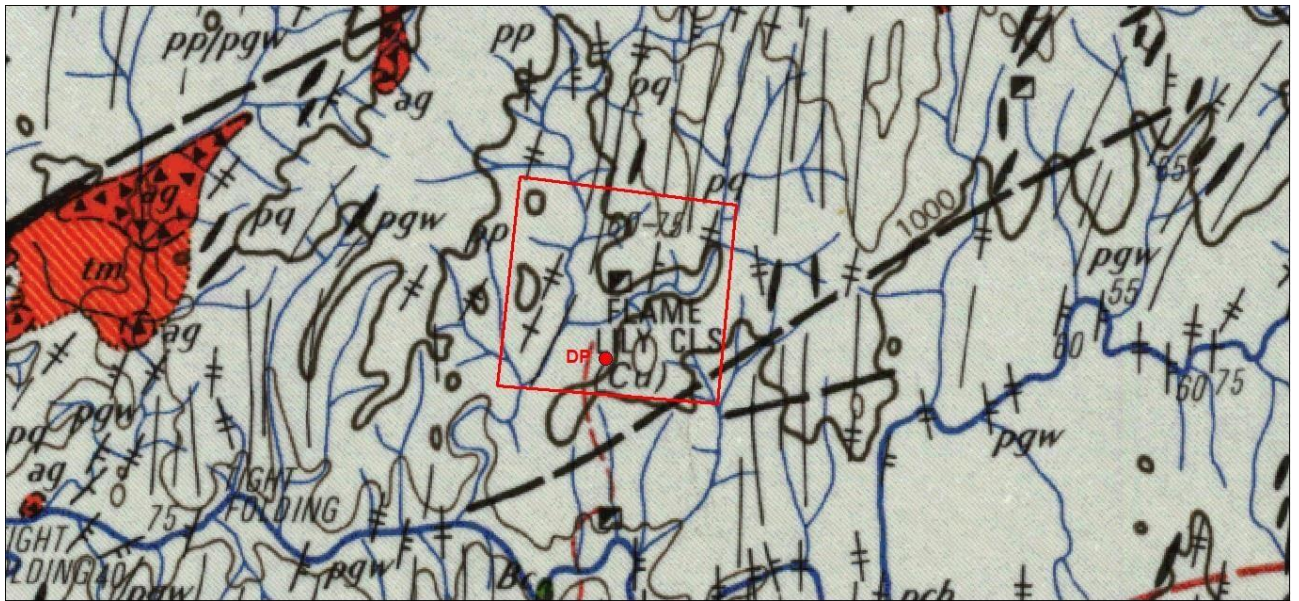


Figure 3. Regional geological setting of the SG application area.

DESCRIPTION OF AREA

The area is described in relation to the topographic map of a scale (1:25 000) as shown in Figure 2. It is an area of approximately 100.0 hectares extended in the Mashonaland West mining province and is bounded by a line commencing at a point A,

Grid reference: **35K 782491 UTM 8072832**

Thence proceeding for a distance of 1030 metres to point B,

Grid reference: **35K 783512 UTM 8072684**

Thence proceed for a distance of 940 metres to point C,

Grid reference: **35K 783410 UTM 8071754**

Thence proceed for a distance of 1040 metres to point D,

Grid Reference: **35K 782371 UTM 8071849**

Thence proceed for a distance of 990m back to point A.

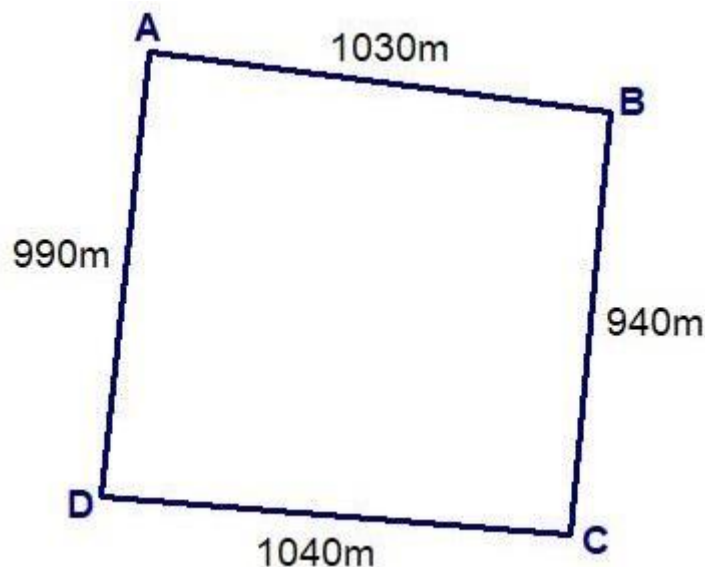


Figure 2. Description of the SG application area.

DETAILS OF SURROUNDING MINES PRODUCTION

CRESCENT

Makonde 17°18'00"S 29°44'30"E COPPER... 424.68 t 1916..71 *Gold*
N-S-striking mineralized quartz-carbonate vein in graphitic slates of the Piriwiri Group, close to a body of agglomerate. Enriched oxidized zone worked out. Also produced 50.11 kg gold in 1916..75.

ALASKA

Makonde 17°24'00"S 30°01'00"E 32 736 t* 1929..77
A zone of massive oxides formed from a secondary sulphide body, chiefly chalcocite, in silicified dolomites of the Lomagundi Group. Dolomites are part of an overthrust sheet which at Alaska has a natural basin shape into which copper solutions could percolate. Also produced silver.
* Estimated production, including that of HANS. Some output declared jointly with ANGWA.

GONDIA

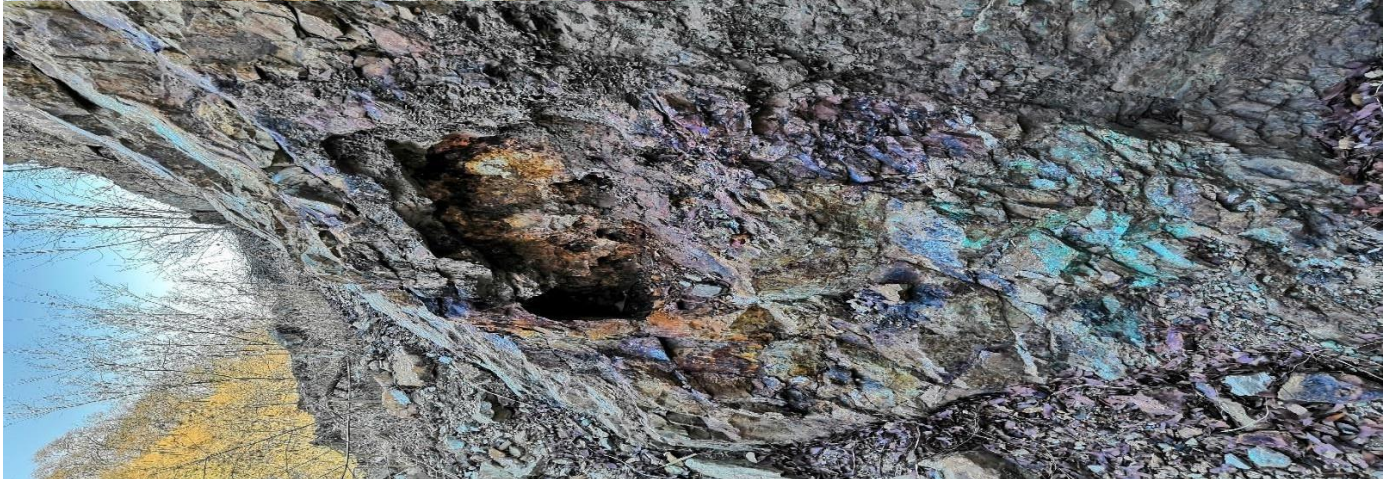
Makonde 17°27'30"S 29°38'30"E 177.63 t 1916,17
NE-striking concordant quartz-carbonate vein in Piriwiri phyllites. Chalcopyrite, bornite. Also produced 3.89 kg gold in 1914--18.

NORTHERN STAR

Makonde 17°18'00"S 29°45'00"E 133.45 t 1917..75
Mineralized quartz-carbonate vein striking 340° and dipping 20-50° E in graphitic slates close to an agglomerate body. Vein just under 1 m wide. Also produced 37.29 kg gold in 1917..75.



SITE PICTURES





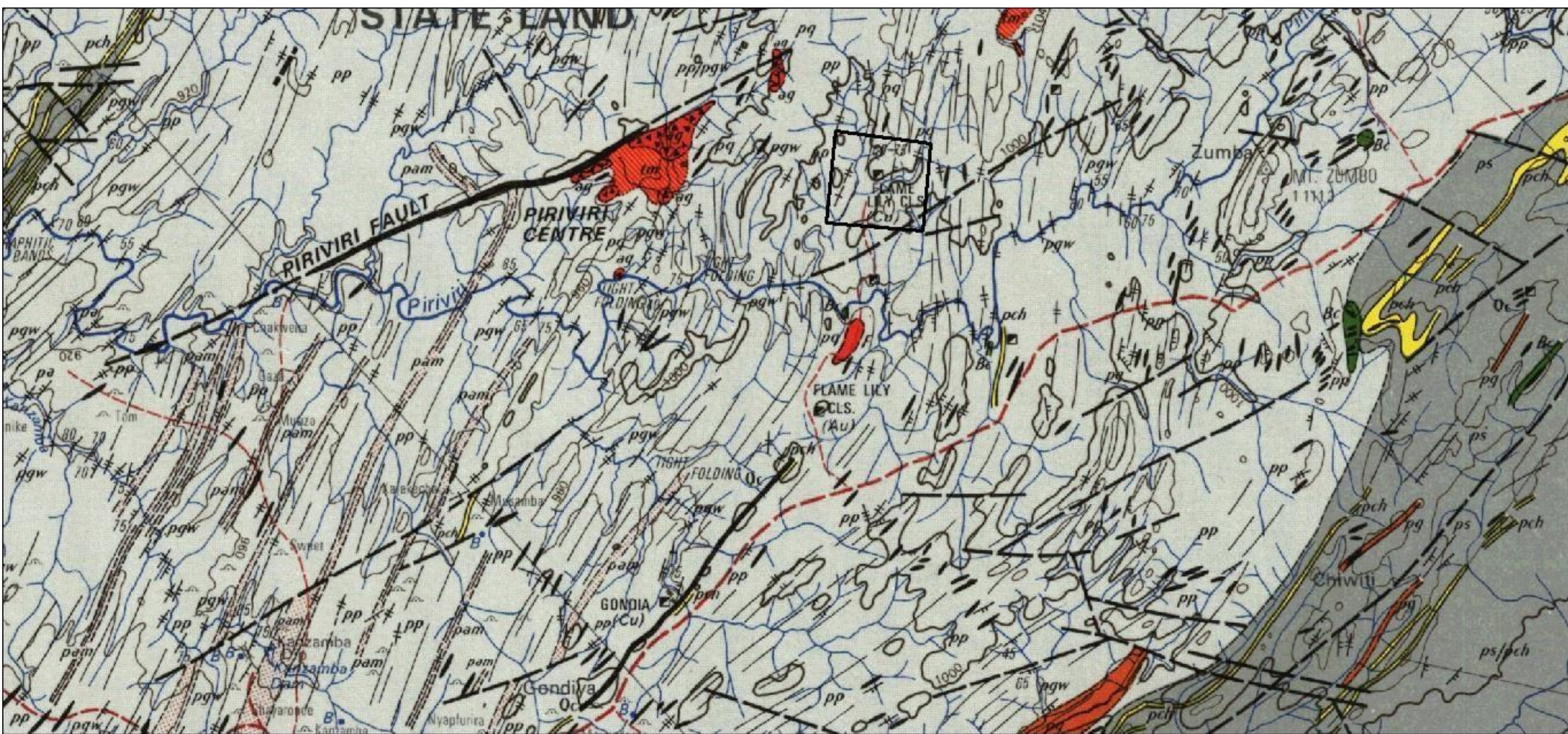


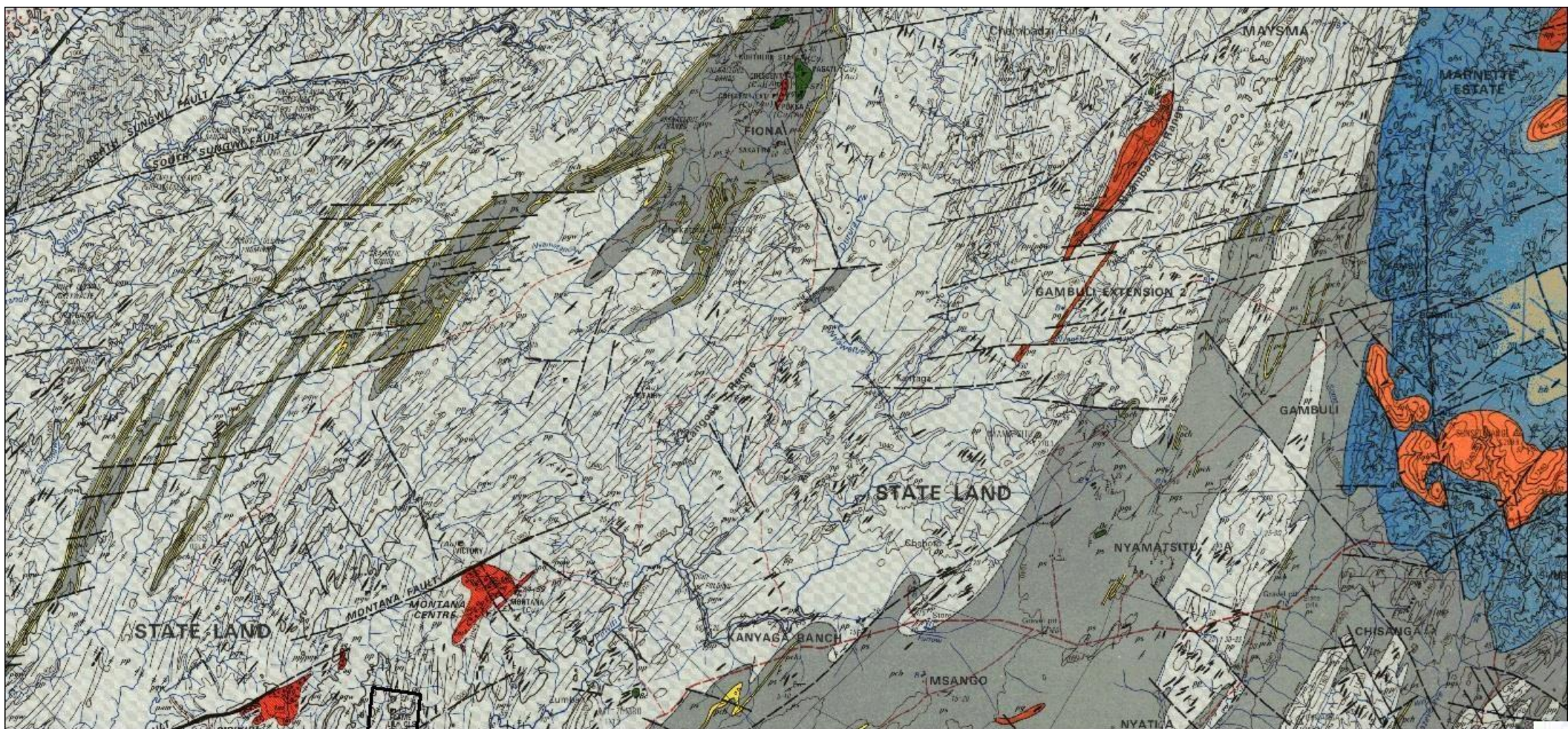














TANGIBLE MINERALS

MINING | MINERAL | EXPLORATION

COPPER MINING

A : Stand 544 Camphill, Kariba

W : brianmotele@gmail.com

P : +27 78 258 5439
+27 65 262 4723